

reggiatrice manuale pneumatica / pneumatic strapping tool / machine à cercler pneumatique

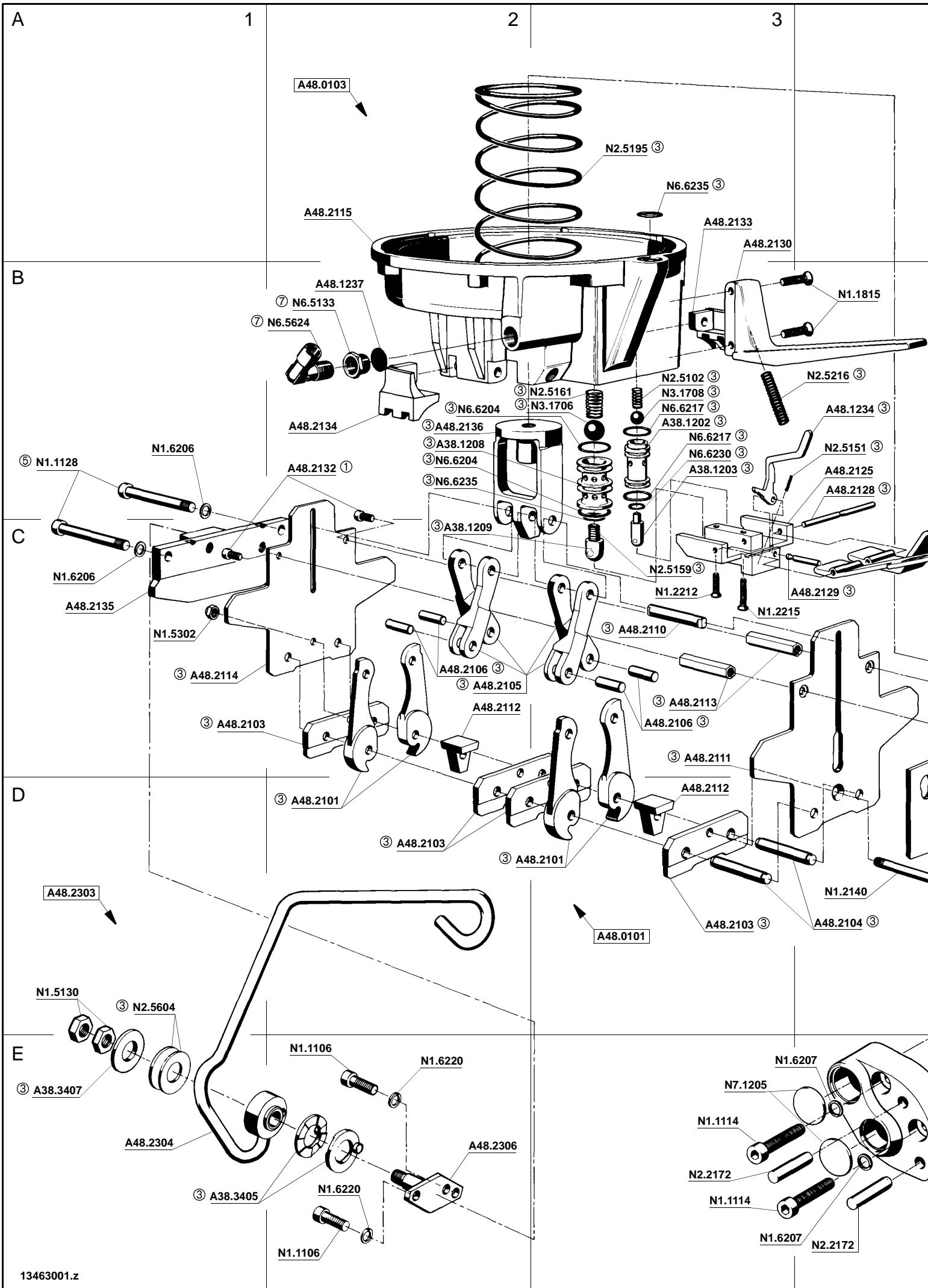


esplosi- distintericambi /

drawing - spare parts list / dessins et liste des pièces de rechange

modelli / models / modèles: AP 34 FH - FROMM A482

CE



8 SPARE PARTS LIST 13.4630.01

13.4630.01	A482/19/0.70-0.90/UNI/4.0		A482.0001.01		25.02.00	
Item-No.		in group	Pcs.	Description	Dimension	Field
A38.1202		A48.0103	1	SECURITY VALVE SHELL		B3
A38.1203		A48.0103	1	VALVE BOLT		B3
A38.1208		A48.0103	1	SEALER VALVE SHELL		B2
A38.1209		A48.0103	1	VALVE BOLT		C2
A38.3405		A48.2303	2	RATCHET DISK		E1
A38.3407		A48.2303	1	THRUST WASHER		E1
[A48.0101]			1	JAW ASSEMBLY		D3
[A48.0103]			1	CYLINDER BOTTOM		A2
[A48.0104]			1	TENSIONING UNIT		B7
A48.1133			2	TONG GUIDE		D4+
A48.1213	*	A48.0104	1	SLIDE PLATE		D5
A48.1226		A48.0104	1	BEARING JACKET		D7
A48.1234		A48.0103	1	CATCH		B4
A48.1237		A48.0103	1	SIEVE		B2
A48.2101	*	A48.0101	4	CUTTING JAW		D2+
A48.2103	*	A48.0101	4	NOTCHING KNIFE		D2+
A48.2104		A48.0101	2	JAW PIN		D4
A48.2105		A48.0101	4	FRONT TOGGLE LINK		C2
A48.2106		A48.0101	4	LEVER BOLT		C2+
A48.2110		A48.0101	1	ROD BAR BOLT		C3
A48.2111		A48.0101	1	SIDE PLATE		C3
A48.2112		A48.0101	2	DISTANCE SUPPORT		C2+
A48.2113		A48.0101	2	SPACER BUSH		C3
A48.2114		A48.0101	1	SIDE PLATE		C1
[A48.2115]		A48.0103	1	CYLINDER BOTTOM		A2
A48.2117			1	PISTON PLATE		B5
A48.2118			1	CYLINDER COVER		A5
A48.2119	*		1	CUTTER		C4
A48.2120	*	A48.0104	1	CUTTER JACK		D4
[A48.2121]		A48.0104	1	CONNECTION PLATE		C5
A48.2125		A48.0103	1	LEVER BODY		B4
A48.2126		A48.0103	1	SEALING VALVE LEVER		C4
A48.2127		A48.0103	1	TENSIONER VALVE LEVER		B4
A48.2128		A48.0103	1	LEVER SHAFT		B4
A48.2129		A48.0103	1	CATCH PIN		C4
A48.2130			1	HANDLE		A3
A48.2131			1	DIAPHRAGM		A5
A48.2132		A48.0101	4	SCREW		B2+
A48.2133			1	JAW GUIDE		A3
A48.2134			1	JAW GUIDE		B2
A48.2135			1	COVER PLATE		C1
A48.2136		A48.0101	1	PISTON ROD		B2
A48.2137		A48.2121	2	BOLT		D5
[A48.2201]	*	A48.0104	1	TENSIONING BODY		D5
A48.2204		A48.0104	2	CENTERING BUSH		C5
[A48.2205]		A48.0104	1	GEAR BODY		C6
A48.2207		A48.0104	1	TENSION SHAFT		C6
A48.2208		A48.0104	1	WORM WHEEL		C7
A48.2210		A48.0104	1	END COVER		C7
A48.2211	*	A48.0104	1	TENSIONING WHEEL		E5
A48.2212		A48.0104	1	PIVOT PIN		D4

[] = Group

* = Wearing parts

13.4630.01	A482/19/0.70-0.90/UNI/4.0		A482.0001.01			25.02.00
Item-No.		in group	Pcs.	Description	Dimension	Field
A48.2213		A48.0104	1	END COVER		E4
A48.2215		A48.0104	1	WORM		C7
[A48.2217]		A48.0103	1	HOSE		D6
[A48.2303]			1	SUSPENSION BRACKET		D1
[A48.2304]		A48.2303	1	SUSPENSION BRACKET		E1
A48.2306		A48.2303	1	FLANGE SHAFT		E2
[L2.1109]			1	AIR MOTOR		D7
L2.1201		L2.1109	1	EXHAUST RING		--
L2.1203		L2.1212	1	PLASTIC JACKET		--
[L2.1212]		L2.1109	1	HOUSING		--
L2.1301		L2.1109	1	END PLATE		--
L2.1302		L2.1109	1	PARALLEL PIN		--
L2.1303		L2.1109	1	CYLINDER		--
L2.1304	*	L2.1109	5	VANE		--
L2.1305		L2.1109	1	ROTOR		--
L2.1306		L2.1314	1	KEY		--
L2.1308		L2.1109	1	SILENCER		--
L2.1313		L2.1109	1	BEARING RING		--
[L2.1314]		L2.1109	1	END PLATE		--
L2.1315		L2.1109	1	PLANET SHAFT		--
L2.1316		L2.1109	2	GEAR WHEEL		--
L2.1317		L2.1109	2	NEEDLE CAGE		--
L2.1318		L2.1109	2	SHAFT		--
L2.1319		L2.1109	1	INTERMEDIATE WHEEL		--
L2.1402		L2.1109	32	BEARING NEEDLE		--
L2.1403		L2.1109	2	GEAR WHEEL		--
L2.1404		L2.1109	2	SHAFT		--
L2.1405		L2.1109	1	BEARING RING		--
L2.1408		L2.1109	1	PLANETARY CAGE		--
L2.1409		L2.1413	1	AIR INLET RING		--
L2.1410		L2.1413	1	TENSION SCREW		--
L2.1411		L2.1413	1	THROTTLE HEAD		--
L2.1412		L2.1413	1	THROTTLE SCREW		--
[L2.1413]		L2.1109	1	AIR INLET HEAD		--
L2.1505		L2.1109	1	KEY		--
N1.1106		A48.2303	2	SCREW	M6 X 20	E2
N1.1114		A48.0104	2	SCREW	M5 X 25	E3
N1.1128			2	SCREW	M8 X 60	B1
N1.1521		A48.0104	1	HEXAGON SCREW	M5 X 16	D5
N1.1813			2	SCREW	M5 X 16	A4+
N1.1814			7	SCREW	M5 X 25	A4+
N1.1815			2	SCREW	M6 X 25	B4
N1.1816		A48.0104	2	SCREW	M4 X 16	C7
N1.2108		A48.0104	2	COUNTERSUNK SCREW	M6 X 16	C4
N1.2109		A48.0104	1	COUNTERSUNK SCREW	M5 X 10	D5
N1.2140		A48.0101	1	COUNTERSUNK SCREW	M5 X 45	D4
N1.2141			1	COUNTERSUNK SCREW	M8 X 30	B5
N1.2212		A48.0103	1	COUNTERSUNK SCREW	M4 X 25	C3
N1.2215		A48.0103	1	COUNTERSUNK SCREW	M4 X 30	C3
N1.5130		A48.2303	2	HEXAGON NUT	M10	D1
N1.5131		A48.0104	1	HEXAGON NUT	M5	D5
N1.5302		A48.0101	1	RETAINING NUT	M5	C1
N1.6206			2	SPRING LOCK WASHER	M8	B1+

[] = Group

* = Wearing parts

13.4630.01	A482/19/0.70-0.90/UNI/4.0		A482.0001.01			25.02.00
Item-No.		in group	Pcs.	Description	Dimension	Field
N1.6207		A48.0104	2	SPRING LOCK WASHER	M5	E3+
N1.6220		A48.2303	2	SPRING LOCK WASHER	M6	E2
N1.6701		L2.1109	2	TOOTH LOCK WASHER		--
N2.2115		A48.0104	1	PARALLEL PIN	6 m6 X 20	D4
N2.2172		A48.0104	2	PARALLEL PIN	5 m6 X 30	E3+
N2.3205		A48.0104	1	WOODRUFF KEY	5 X 7.5 X 18.57	C7
N2.4902			4	HAMMER HEAD BOLT	1.85 X 4.76	--
N2.5102		A48.0103	1	PRESSURE SPRING	0.6 X 8 X 14/6	B3
N2.5151		A48.0103	1	PRESSURE SPRING	0.3 X 2.8 X 11/11.5	B4
N2.5159		A48.0103	1	PRESSURE SPRING	0.5 X 7 X 18/7.5	C3
N2.5161		A48.0103	1	PRESSURE SPRING	1 X 12 X 20/6.5	B3
N2.5195			1	PRESSURE SPRING	3.6 X 63.6 X 140/6.5 (LINKS)	A2
N2.5196			1	PRESSURE SPRING	4.5 X 82.5 X 160/6.5 (LINKS)	B5
N2.5216			1	PRESSURE SPRING	1.6 X 9.6 X 76/25.5	B4
N2.5604		A48.2303	2	CUP SPRING	31.5 X 16.3 X 1.25	D1
N3.1102		L2.1109	4	BALL BEARING	15 X 32 X 9	--
N3.1108		L2.1109	1	BALL BEARING	6 X 19 X 6	--
N3.1109		L2.1109	1	BALL BEARING	8 X 22 X 7	--
N3.1131		A48.0104	1	BALL BEARING	12 X 32 X 10	D7
N3.1706		A48.0103	1	BALL	15 MM	B3
N3.1708		A48.0103	1	BALL	10 MM	B3
N3.2313		A48.0104	1	NEEDLE CASE	12 X 18 X 12	C5
N3.2342		A48.0104	1	NEEDLE CASE	17 X 23 X 12	C7
N3.2343		A48.0104	1	NEEDLE BUSH	17 X 23 X 12	D5
N3.2405		A48.0104	1	INNER RACEWAY	12 X 16 X 16	D4
N3.2608		A48.0104	1	PACKING RING	17 X 23 X 3	E5
N3.3144		A48.0104	1	SLIDE-BEARING	15 X 17 X 23 X 17	E4
N3.4108		A48.0104	1	THRUST BEARING CAGE	17 X 30 X 2	C6
N3.4311		A48.0104	2	THRUST RACE	17 X 30 X 1	C7
N41.9128			1	ADHESIVE LABEL	30 X 10 X 0.1	--
N41.9129			1	ADHESIVE LABEL	p max. 6 bar/87 psi	--
N4.9137			1	NUMBER PLATE	<<A482>>	--
N4.9159			1	LABEL	<<CE>>	--
N6.5133		A48.0103	1	REDUCING COUPLING		B2
N6.5195		A48.0104	1	FITTING		E7
N6.5624		A48.0103	1	ANGLE	G 1/4	B2
N6.6204		A48.0103	2	O-RING	18 X 2	B2
N6.6217		A48.0103	2	O-RING	15 X 2	B3
N6.6230		A48.0103	1	O-RING	8 X 1.5	B3
N6.6234		L2.1413	1	O-RING	7.1 X 1.6	--
N6.6235			1	O-RING	12 X 2	A3
N6.6235		A48.0103	1	O-RING	12 X 2	B2
N6.6253		A48.0104	1	O-RING	42 X 1,5	C7
N6.6505		L2.1413	1	FLAT SEAL	21 X 17 X 1,5	--
N7.1205		A48.0104	2	SEALING DISK	18	E3

[] = Group

* = Wearing parts

La gamma di prodotti jointssystem®

Reggiatrici
per reggetta d'acciaio e plastica

Reggiatrici automatiche e teste
Per reggetta d'acciaio e plastica

Sistema per balle
Reggetta acciaio e plastica

Crimp system (rizzaggio)

Reggetta
d'acciaio e plastica

Sigilli

Accessori per la reggiatura

The jointssystem® range of products

Strapping tools
for steel and plastic strap

Strapping machines and heads
for steel and plastic strap

Baling systems
steel and plastic strap

Crimp systems

Strap
Steel and plastic

Seals

Accessories

La gamme de produits jointssystem®

Appareils de cerclage
pour feuillard d'acier et plastique

Machines et têtes de cerclage pour
feuillard d'acier et plastique

Systèmes de cerclage de balles
feuillard d'acier et plastique

Systèmes crimp

Feuillard d'emballage
acier et plastique

Chapes

Accessoir



joint system

via volvera 123
10090 bruino torino italy
t + 39 011 957 29 54
f + 39 011 908 42 94
info @ jointssystem.com

www.jointssystem.com