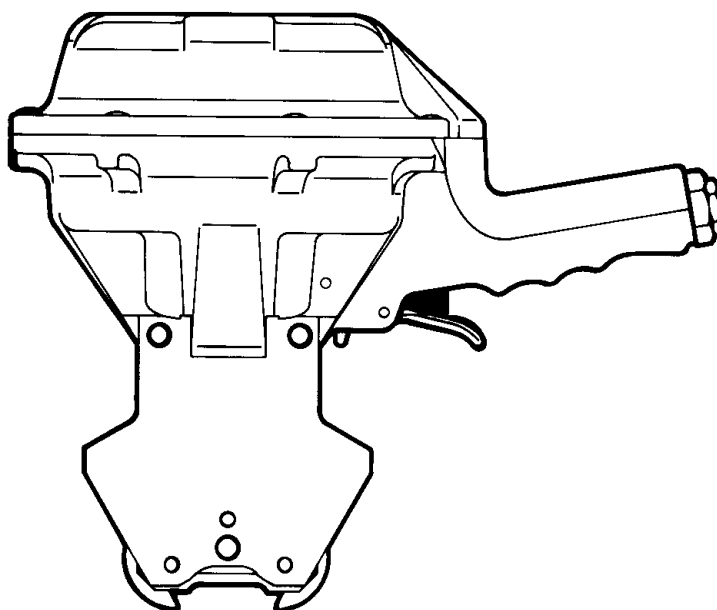


# FROMM

OPERATION MANUAL / SPARE PARTS LIST

## PNEUMATIC SEALER MODEL A461.0002

13.4510.01 - 13.4511.01



handling & packaging  
joint system®

via volvera 123  
10090 bruino torino italy  
t +39 011 957 29 54  
f +39 011 908 42 94  
p.iva / c.f. 07028380017

[info@jointsystem.com](mailto:info@jointsystem.com)

13451001.en/MAS/© 02.04  
13451101.en

### CE Declaration of conformity

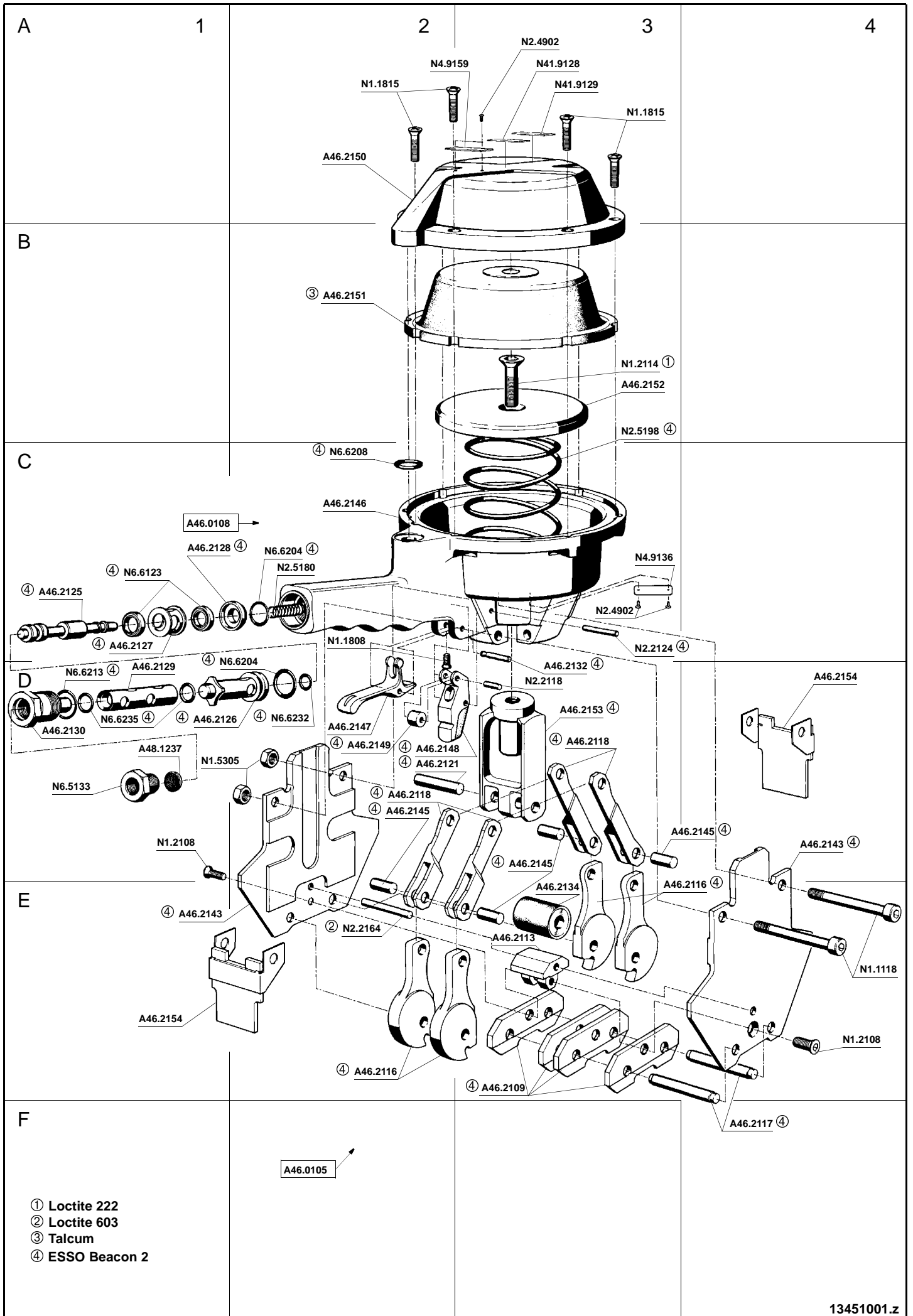
We declare that the machine A461  
is in conformity with the following standard or  
standardised documents:  
98/37/EEC

FROMM Holding AG  
Hinterbergstrasse 26  
CH - 6330 Cham  
25.02 2004

A handwritten signature in black ink, appearing to read 'R. Fromm'.

R.Fromm  
Director





## 9 SPARE PARTS LIST 13.4510.01/13.4511.01

13.4510.01 13.4511.01	A461/32/0.80-0.90/N A461/32/0.80-0.90/P		A461.0002.01		15/06/98
Item-No.		Pcs.	Description	Dimension	Field
[A46.0105]		1	JAW ASSEMBLY		F2
[A46.0108]		1	CYLINDER BOTTOM		C1
A46.2109	* ->[A46.0105]	4	NOTCHING KNIFE		E3
A46.2113	->[A46.0105]	1	DISTANCE SUPPORT		E3
A46.2116	* ->[A46.0105]	4	CUTTING JAW		E2+
A46.2117	->[A46.0105]	2	JAW PIN		F4
A46.2118	->[A46.0105]	4	FRONT TOGGLE LINK		D2+
A46.2121	->[A46.0105]	1	ROD BAR BOLT		D2
A46.2125	->[A46.0108]	1	VALVE STEM		C1
A46.2126	->[A46.0108]	1	VALVE SHELL		D1
A46.2127	->[A46.0108]	1	EXHAUST RING		C1
A46.2128	->[A46.0108]	1	SUSTAINING RING		C1
A46.2129	->[A46.0108]	1	SUPPORTING TUBE		D1
A46.2130	->[A46.0108]	1	CONNECTING SCREW		D1
A46.2132	->[A46.0108]	1	LEVER SHAFT		D3
A46.2134	->[A46.0105]	1	BUFFER		E3
A46.2143	->[A46.0105]	2	SIDE PLATE		D4+
A46.2145	->[A46.0105]	4	LEVER BOLT		D2+
A46.2146	->[A46.0108]	1	CYLINDER BOTTOM		C2
A46.2147	->[A46.0108]	1	VALVE LEVER		D2
A46.2148	->[A46.0108]	1	PIVOTED LEVER		D2
A46.2149	->[A46.0108]	1	SLIDING ROLLER		D2
A46.2150		1	CYLINDER COVER		A2
A46.2151		1	DIAPHRAGM		B2
A46.2152		1	PISTON PLATE		B3
A46.2153	->[A46.0105]	1	PISTON ROD		D3
[A46.2154]		2	SAFETY GUARD		D4+
A48.1237	->[A46.0108]	1	SIEVE		D1
N1.1118		2	SCREW	M8 X 50	E4
N1.1808	->[A46.0108]	1	SCREW	M4 X 10	C2
N1.1815		7	SCREW	M6 X 25	A2+
N1.2108	->[A46.0105]	2	SOCKET COUNTERSUNK HEAD SCREW	M6 X 16	D1+
N1.2114		1	SOCKET COUNTERSUNK HEAD SCREW	M10 X 40	B3
N1.5305		2	RETAINING NUT	M8	D1
N2.2118	->[A46.0108]	1	PARALLEL PIN	4 M6 X 14	D3
N2.2124	->[A46.0108]	1	PARALLEL PIN	4 M6 X 40	C3
N2.2164	->[A46.0105]	1	PARALLEL PIN	6 M6 X 40	E2
N2.4902		4	HAMMER HEAD BOLT	1,85 X 4,76	A3+
N2.5180	->[A46.0108]	1	PRESSURE SPRING	0.8X7.8X30/8.5	C2
N2.5198		1	PRESSURE SPRING	4,5X67,5X180/7,5	B3
N4.9136		1	LABEL	<<A461>>	C3
N4.9159		1	LABEL	<<CE>>	A2
N41.9128		1	ADHESIVE LABEL		A3
N41.9129		1	ADHESIVE LABEL		A3
N6.5133	->[A46.0108]	1	REDUCING COUPLING		D1
N6.6123	->[A46.0108]	2	SEAL	12 X 19 X 2.3	C1
N6.6204	->[A46.0108]	2	O-RING	18 X 2	C2+
N6.6208		1	O-RING	14 X 2	C2
N6.6213	->[A46.0108]	1	O-RING	20 X 2	D1
N6.6232	->[A46.0108]	1	O-RING	8 X 2	D2
N6.6235	->[A46.0108]	2	O-RING	12 X 2	D1

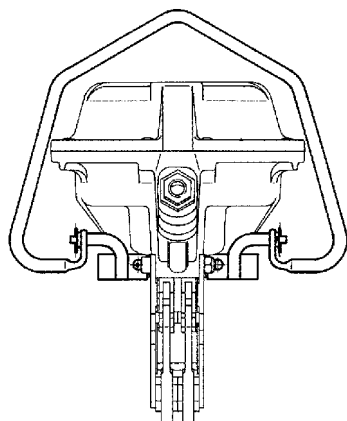
[] = Group

\* = Wearing Parts

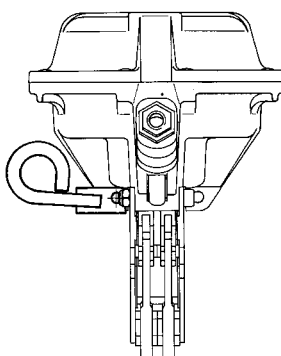
## 12 ACCESSORIES

Following suspension brackets can be mounted on the tool and have to be ordered separately:

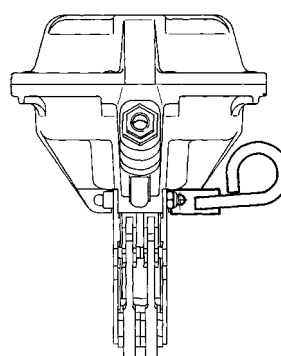
### Suspensions for tool assembling „N“



Universal suspension  
**A46.2201**  
for normal, vertical and  
horizontal working position

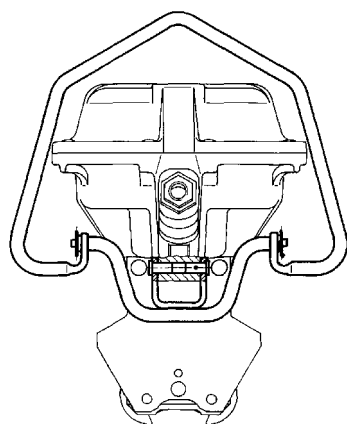


Suspension  
**A46.2210**  
left side

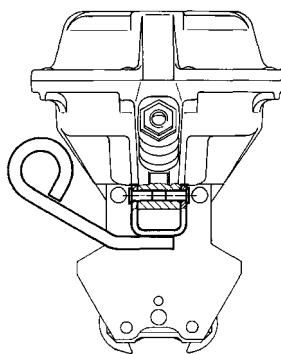


Suspension  
**A46.2216**  
right side

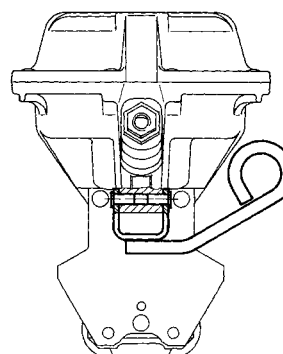
### Suspensions for tool assembling „P“



Universal suspension  
**A46.2207**  
for normal, vertical and  
horizontal working position



Suspension  
**A46.2213**  
left side



Suspension  
**A46.2218**  
right side