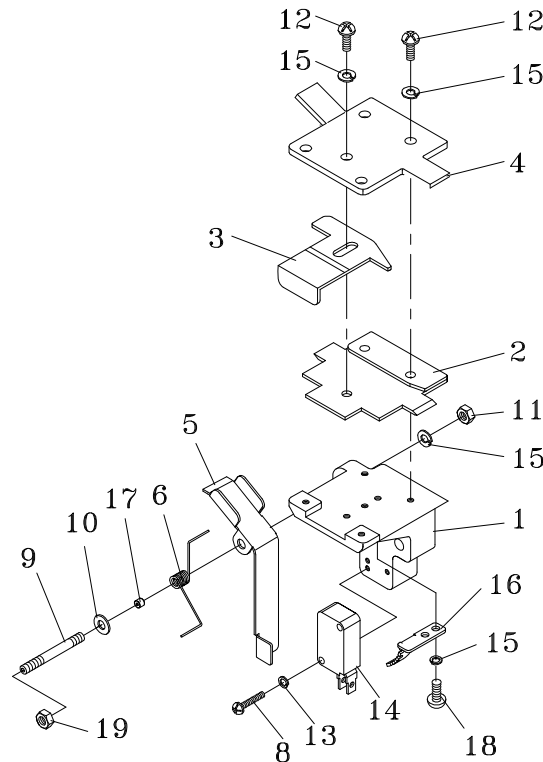


REF. NO.	PART NO.	DESCRIPTION	Q'TY	REMARKS
1	T5-1-23110	Feed Shooter	1	
2	SW05	SW, M5	2	
3	HBS0512	HBS, M5x12	2	
4	SR10	Stop Ring, S-10	1	
5	TC-048	Shaft	1	
6	TC-049	Roller	1	
7	PW06A	PW, M6 (A)	4	
8	SW06	SW, M6	2	
9	HBS0616	HBS, M6x16	2	
10	HN06	HN, M6	2	
11	PW05	PW, M5	2	

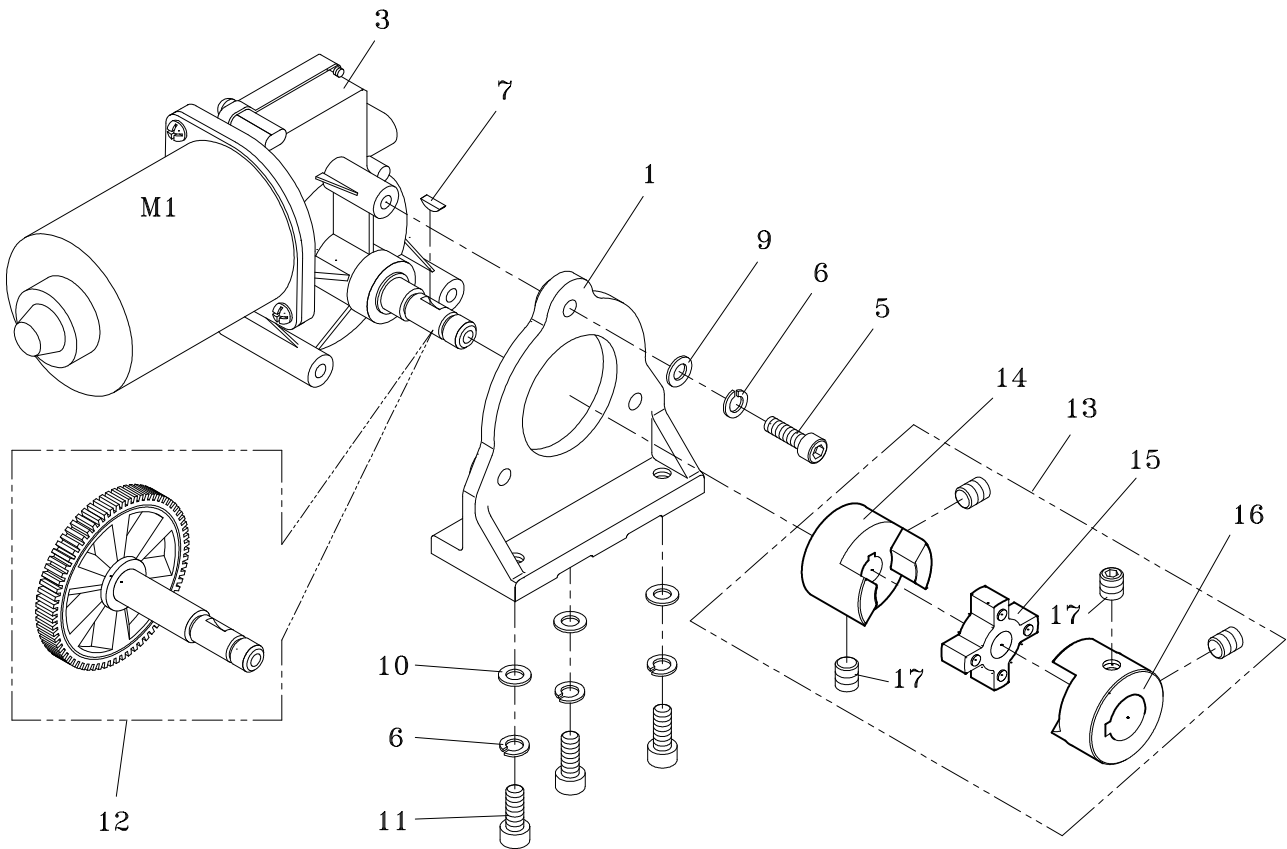


REF. NO.	PART NO.	DESCRIPTION	Q'TY	REMARKS
1	T5-1-24110	Strap Guide Support	1	
2	T5-1-24120	Strap Guide (A)	1	
3	T5-1-24131	Strap Guide (B)	1	
4	T5-1-24142	Strap Guide Cover	1	
5	T5-1-24151	Strap Guide (C)	1	
6	T5-1-24182	Spring	1	
8	PMS0315	PMS, M3x15	2	
9	T5-1-24191	Spring Shaft	1	
10	PW04	PW, M4	1	
11	HN04	HN, M4	1	
12	PMS0412	PMS, M4x12	5	
13	SW03	SW, M3	2	
14	TF-006	Micro Switch	1	
15	SW04	SW, M4	8	
16	T5-1-24260	Tension Socket	1	
17	T5-1-24270	Spring Bush	1	
18	PMS0408	PMS, M4x8	2	
19	NTE04	NTE, M4	1	

# 1-3

# TRANSMISSION GROUP

# T5-1-30000

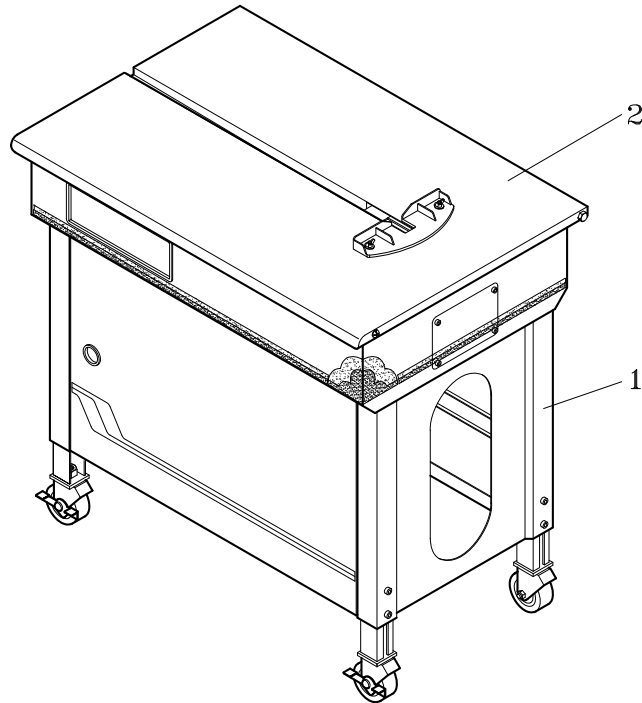


REF. NO.	PART NO.	DESCRIPTION	Q'TY	REMARKS
1	T5-1-30110	Main Motor Support	1	
3	T5-1-30130	Main Motor (M1)	1	
5	HBS0625	HBS, M6×25	3	
6	SW06	SW, M6	6	
7	KYC0310	Key, 3x10	1	
9	PW06A	PW, M6 (A)	3	
10	PW06C	PW, M6 (C)	3	
11	HBS0616	HBS, M6×16	3	
12	T5-1-30220	Worm Gear For M1 Motor	1	
13	T5-1-30230	Flexible Coupling	1	
14	T5-1-30240	Hub (L.H.)	1	
15	T5-1-30250	Flexible Spacer	1	
16	T5-1-30260	Hub (R.H.)	1	
17	HSS0608G	HSS, M6×8 (G)	4	

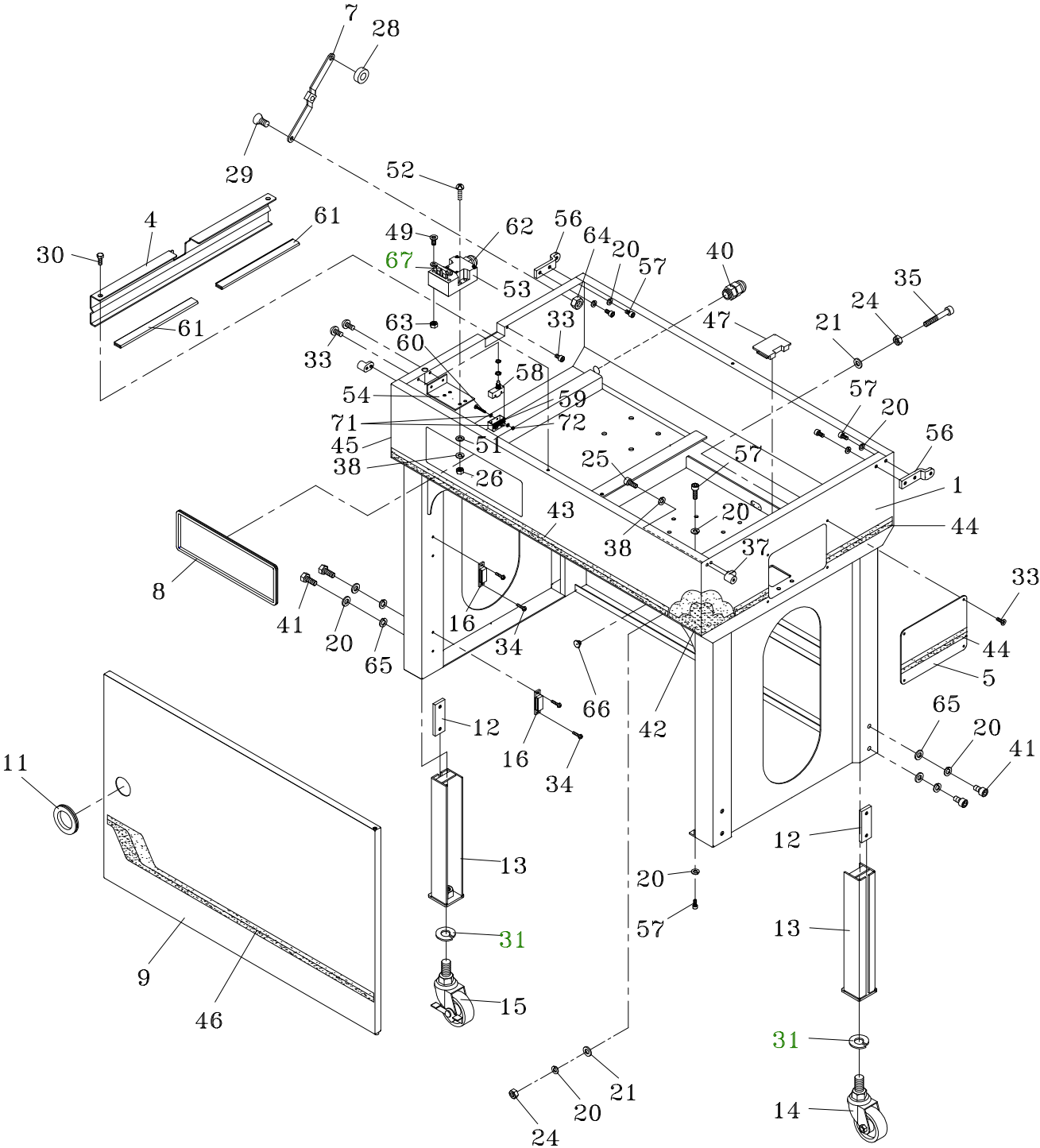
2

# BODY FRAME UNIT

T5-2-90001  
T5-2-90002



REF. NO.	PART NO.	DESCRIPTION	Q'TY	REMARKS
	T5-2-90001	Body Frame Unit (For TP-501)	1	
	T5-2-90002	Body Frame Unit (For TP-502)	1	
1	T5-2-10004	Body Frame Group (For TP-501)	1	SEE PAGE 19
	T5-2-10003	Body Frame Group (For TP-502)	1	SEE PAGE 19
2	T5-2-20000	Table Top Group	1	SEE PAGE 23



2-1

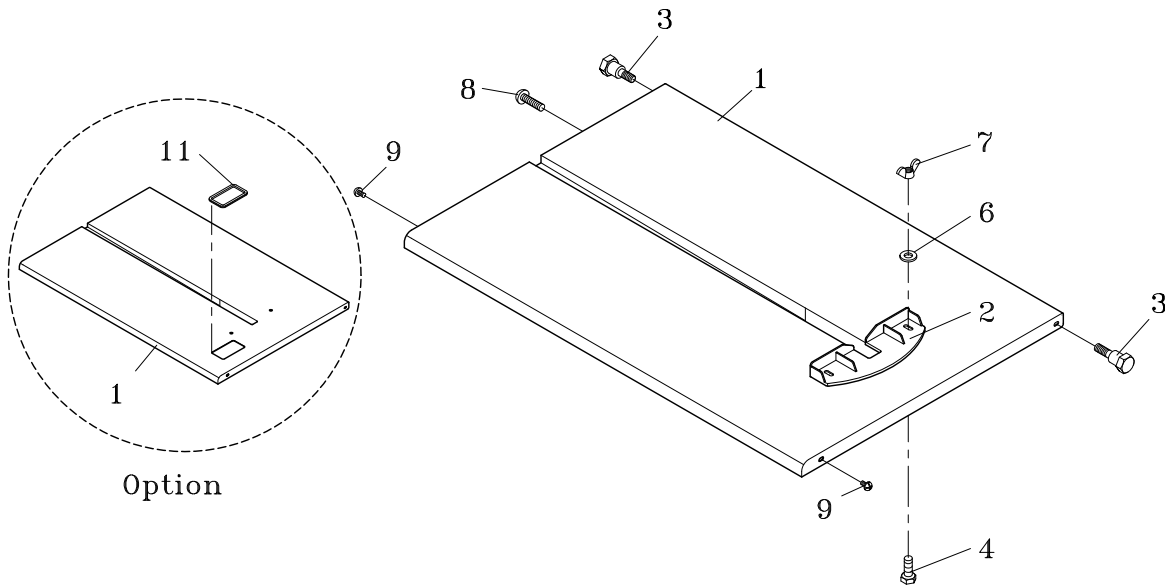
## BODY FRAME GROUP

T5-2-10003

T5-2-10004

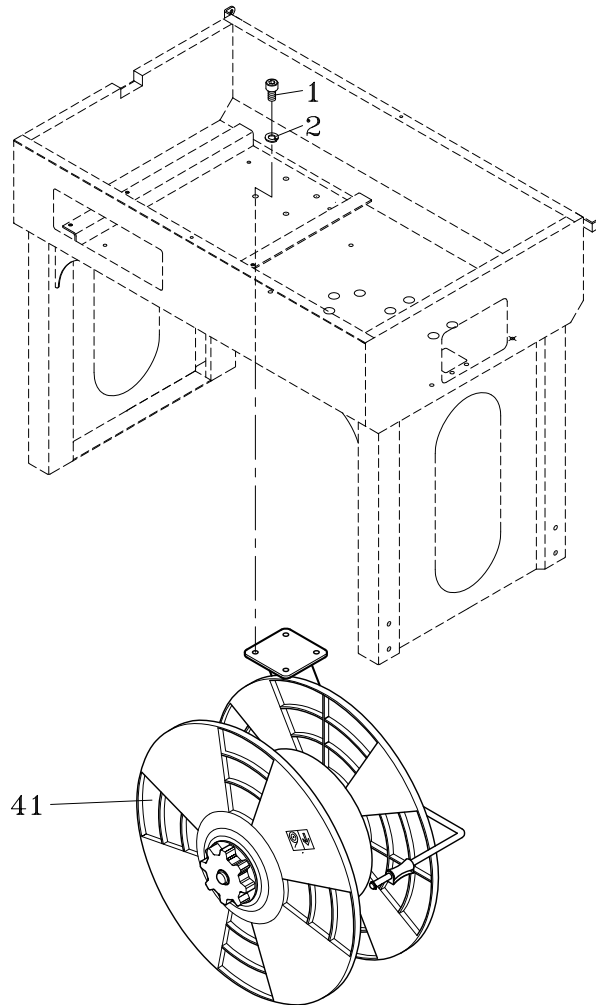
REF. NO.	PART NO.	DESCRIPTION	Q'TY	REMARKS
	T5-2-10004	Body Frame Group (For TP-501)	1	
	T5-2-10003	Body Frame Group (For TP-502)	1	
1	T5-2-10110	Body Frame (For TP-501)	1	
	T5-2-10210	Body Frame (For TP-502)	1	
4	T5-2-10140	Support	1	
5	T5-2-10150	Side Cover	1	
7	T5-2-10170	Hinge	1	
8	T5-2-10180	Grommet	1	
9	T5-2-10190	Front Door (For TP-501)	1	
11	TE-010	Grommet (For TP-501)	1	
12	TC-031	Fixing Plate	4	
13	T7-5-10160	Adjustable Leg	4	
14	TC-006	Caster (Free)	2	
15	TC-007	Caster (Brake)	2	
16	T6-5-10160	Magnet Catch (For TP-501)	2	
20	SW06	SW, M6	11	
24	HN06	HN, M6	1	
25	HBS0512	HBS, M5×12	4	
26	HN05	HN, M5	6	
28	TC-068	Collar	1	
29	FMS0612	FMS, M6×12	1	
30	FMS0408	FMS, M4x8	2	
31	SW16	SW, M16	4	
33	TMS0408	TMS, M4×8	7	
34	TMS0308	TMS, M3×8 (For TP-501)	4	
35	HBS0635	HBS, M6×35	1	
37	T5-2-10471	Collar	2	
38	SW05	SW, M5	8	
40	T5-2-10500	Cable Gland (PG9)	1	
41	HB0616	HB, M6×16	8	
42	T5-2-10520	Colored Adhesive Tape (A)	1	
43	T5-2-10530	Colored Adhesive Tape (B)	1	
44	T5-2-10540	Colored Adhesive Tape (C)	1	

REF. NO.	PART NO.	DESCRIPTION	Q'TY	REMARKS
45	T5-2-10550	Colored Adhesive Tape (D)	1	
46	T5-2-10560	Colored Adhesive Tape (E) (For TP-501)	1	
47	T5-2-10570	Grommet (For CE)	1	
49	FMS0508	FMS, M5x8 (For TUV CE Version) (Option )	2	
51	PW05	PW, M5	4	
52	PMS0520	PMS, M5×20	4	
53	TK-035	Interlock Safety Switch (For TUV CE Version) (Option )	1	
54	T5-2-10640	Safety Switch Plate (For TUV CE Version) (Option )	1	
56	T5-2-10660	Table Top Holder	2	
57	HBS0612	HBS, M6×12	6	
58	TF-018	Safety Limit Switch (For CSA/UL) (Option )	1	
59	TF-031	Switch Cover (For CSA/UL)(Option )	1	
60	PMS0430	PMS, M4×30 (For CSA/UL)(Option )	2	
61	T5-2-10710	Cushion	2	
62	T6-6-10980	Cable Gland (PG11) (For TUV CE Version)(Option )	1	
63	HN05	HN, M5 (For TUV CE Version) (Option )	2	
64	NTE06	NTE, M6	1	
65	PW06A	PW, M6 (A)	8	
66	T7-5-20210	Rubber Plug (For TP-502)	1	
67	T7-5-10210	Switch Actuator (Option)	1	
71	PW04	PW, M4	4	
72	HN04	HN, M4	2	

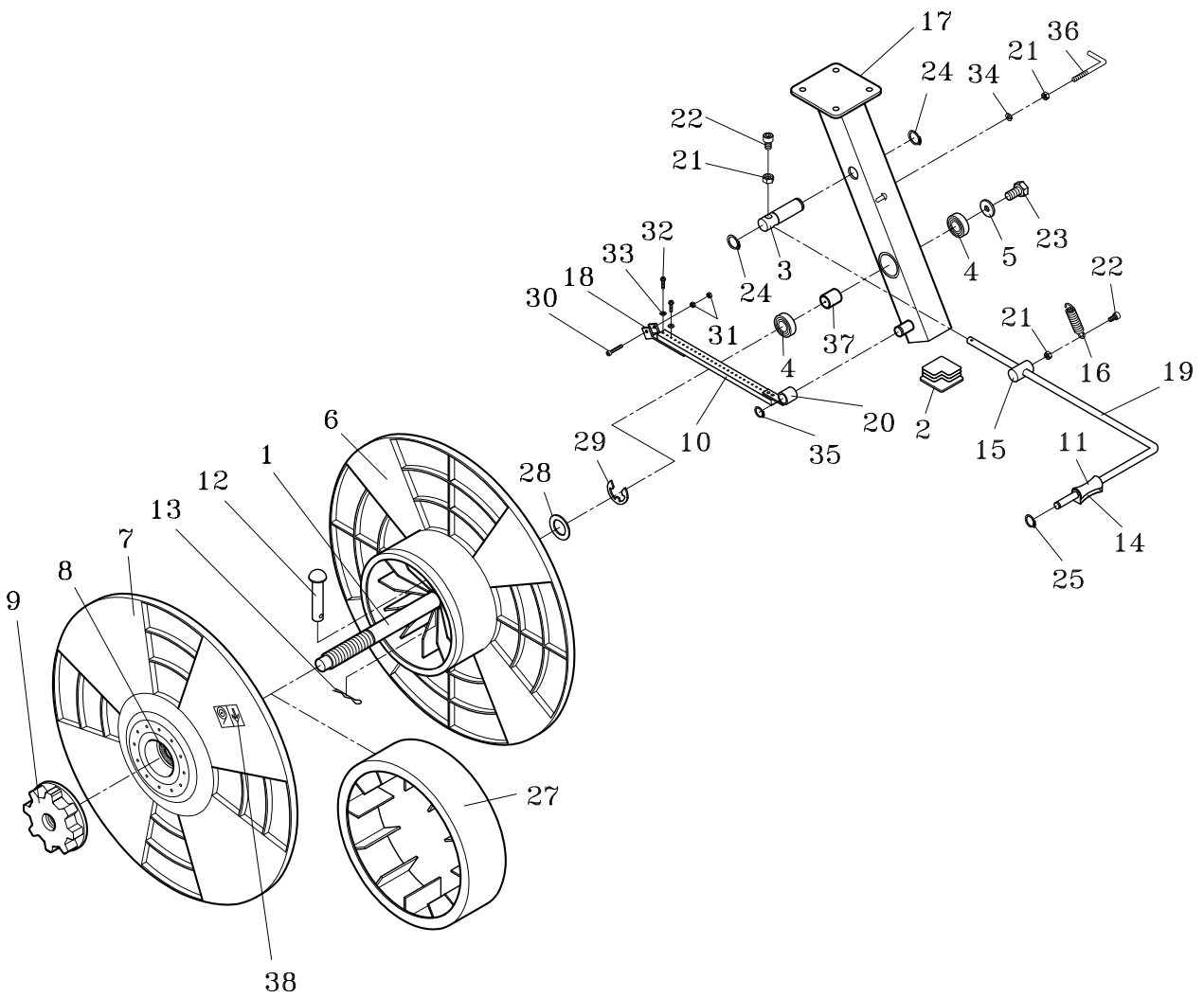


REF. NO.	PART NO.	DESCRIPTION	Q'TY	REMARKS
1	T5-2-20110	Table Top	1	
	T5-2-20200	Table Top (For Display Version) (Option)	1	
2	TC-004	Package Guide	1	
3	TC-070	Shaft	2	
4	HB0612	HB, M6x12	2	
6	PW06B	PW, M6 (B)	2	
7	WN06	WN, M6	2	
8	TMS0612	TMS, M6x12	1	
9	TMS0508	TMS, M5x8	2	
11	TE-034	Grommet (For Display Version) (Option)	1	



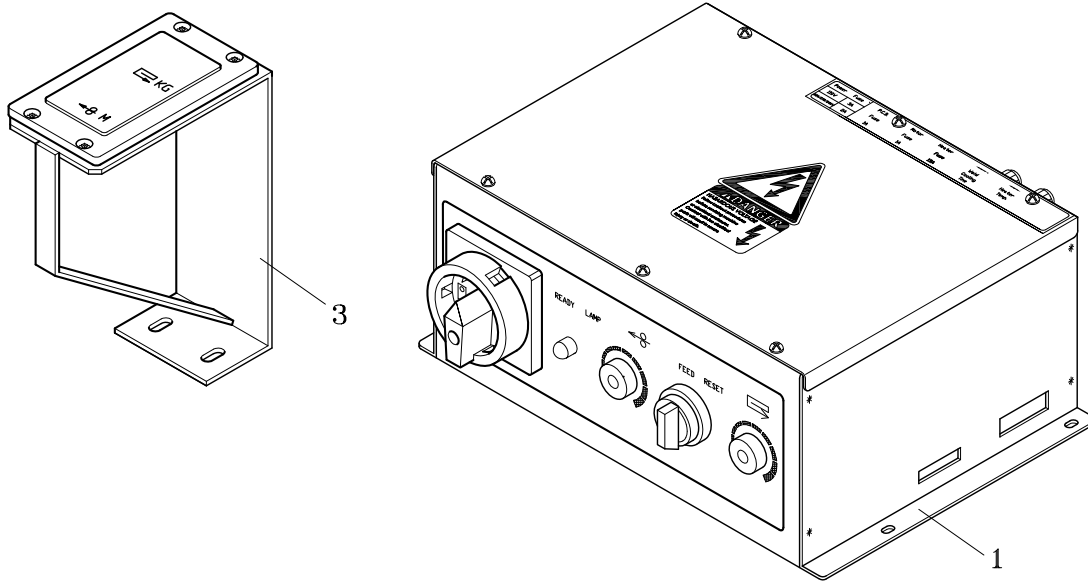


REF. NO.	PART NO.	DESCRIPTION	Q'TY	REMARKS
1	HBS0816	HBS, M8x16	4	
2	SW08	SW, M8	4	
41	T5-3-11000	Reel Control Group	1	SEE PAGE 24



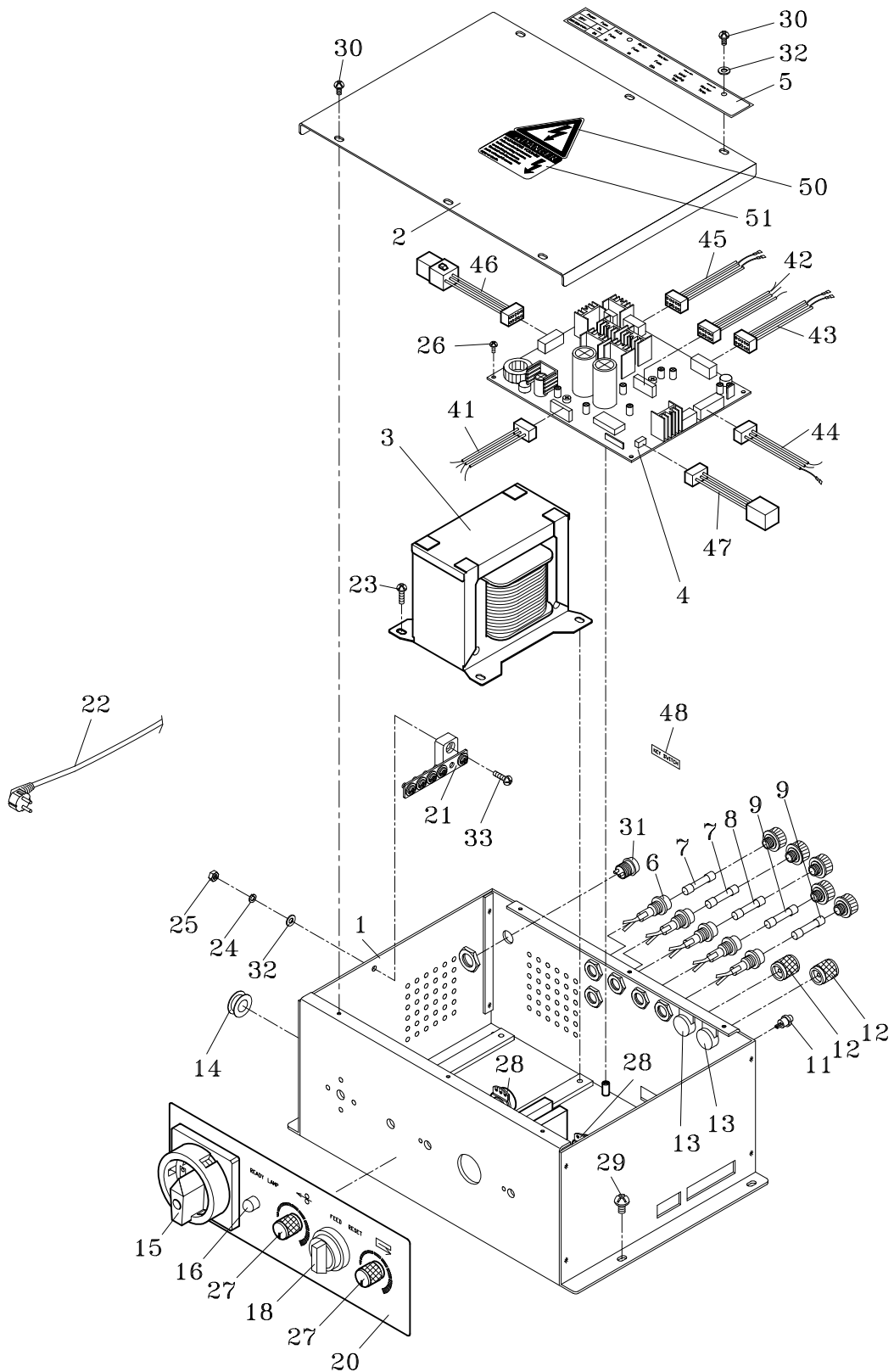
**3-1****REEL CONTROL GROUP****T5-3-11000**

REF. NO.	PART NO.	DESCRIPTION	Q'TY	REMARKS
1	TC-003	Reel Shaft	1	
2	TC-005	Lid	1	
3	TC-009	Brake Shaft	1	
4	BR6003ZZ	Bearing, 6003ZZ	2	
5	TC-011	Washer	1	
6	TC-013	Inner Flange	1	
7	TC-014	Outer Flange	1	
8	TC-015	Protector	1	
9	TC-016	Reel Nut Handle	1	
10	TC-018	Brake Lining	1	
11	TC-019	Roller	1	
12	TC-020	Pin	1	
13	TC-021	Split Pin	1	
14	TC-022	Roller Holder	1	
15	TC-024	Brake Adjuster	1	
16	TC-025	Spring	1	
17	TC-044	Reel Support	1	
18	TC-045-1	Fixing Brake Lining Bracket	1	
19	TC-046-1	Arm	1	
20	TC-050	Lining Holder	1	
21	HN06	HN, M6	3	
22	HBS0616	HBS, M6×16	2	
23	HB0816	HB, M8×16	1	
24	SR20	Stop Ring, S-20	2	
25	SR10	Stop Ring, S-10	1	
27	TC-075	Center Drum 280MM	1	
28	TC-076	Washer	1	
29	ER19	Snap Ring, E-19	1	
30	HBS0425	HBS, M4×25	1	
31	HN04	HN, M4	2	
32	PMS0416	PMS, M4×16	4	
33	PW04	PW, M4	4	
34	SW06	SW, M6	1	
35	SR15	Stop Ring, S-15	1	
36	TC-092	Holder	1	
37	TC-094	Spacer	1	
38	LA-31010	Label	1	



REF. NO.	PART NO.	DESCRIPTION	Q'TY	REMARKS
1	T5-4-90007	Electric Control Unit (For Standard, CE , CSA-UL Version)	1	
	T5-4-90008	Electric Control Unit (For with Display) (For Standard, CE , CSA-UL Version) (Option)	1	
	T5-4-10004	Electric Control Group (For Standard, CE , CSA-UL Version)	1	SEE PAGE 27
	T5-4-10005	Electric Control Group (For TUV CE Version) (Option)	1	SEE PAGE 27
	T5-4-20004	Electric Control Group (For with Display) (For Standard, CE , CSA-UL Version) (Option)	1	SEE PAGE 27
	T5-4-20005	Electric Control Group (For with Display) (For TUV CE Version)(Option)	1	SEE PAGE 27
	3	T5-4-30000	Indicator Group (For with Metric Display) (Option)	1
T5-4-30001		Indicator Group(For with Imperial Display) (Option)	1	SEE PAGE 30

**ELECTRIC CONTROL GROUP** T5-4-10004  
 T5-4-10005  
 T5-4-20004  
 T5-4-20005



## 4-1

## ELECTRIC CONTROL GROUP

T5-4-10004

T5-4-20004

REF. NO.	PART NO.	DESCRIPTION	Q'TY	REMARKS
	T5-4-10004	Electric Control Group (For Standard, CE , CSA-UL Version)	1	
	T5-4-10005	Electric Control Group (For TUV CE Version)(Option)	1	
	T5-4-20004	Electric Control Group (For with Display) (For Standard, CE , CSA-UL Version) (Option)	1	
	T5-4-20005	Electric Control Group (For with Display)(For TUV CE Version)(Option)	1	
1	T5-4-10111	Box	1	
2	T5-4-10120	Cover	1	
3	T5-4-10130	Transformer (For 220V/230V/240V)	1	
	T5-4-10131	Transformer (For 110V)	1	
4	T5-4-10142	P.C.B.	1	
	T5-4-20502	P.C.B.(For Machine With Display For Metric Size) (Option)	1	
	T5-4-20512	P.C.B. (For Machine With Display For Imperial Size) (Option)	1	
5	LA-20055	Label	1	
6	T5-4-10160	Fuse Holder	5	
7	T6-6-30032	Fuse (For 110V/3A)	2	
	T6-6-30031	Fuse (For 220V/230V/240V/2A)	2	
8	T6-6-30036	Fuse (1A)	1	
9	T6-6-30133	Fuse (10A)	2	
11	T5-4-10210	Jog Switch	1	
12	T5-4-10221	Knob	2	
13	T5-4-10231	Variable Resistor (5K)	2	
14	T5-4-10580	Grommet	2	
15	TK-001	Main Power Switch	1	
16	T5-4-10260	Ready Lamp	1	
18	TG-036	Selector Switch (Feed/Reset)	1	
20	LA-10015	Label	1	
21	T5-4-10310	Earth Plate (5P)	1	

## 4-1

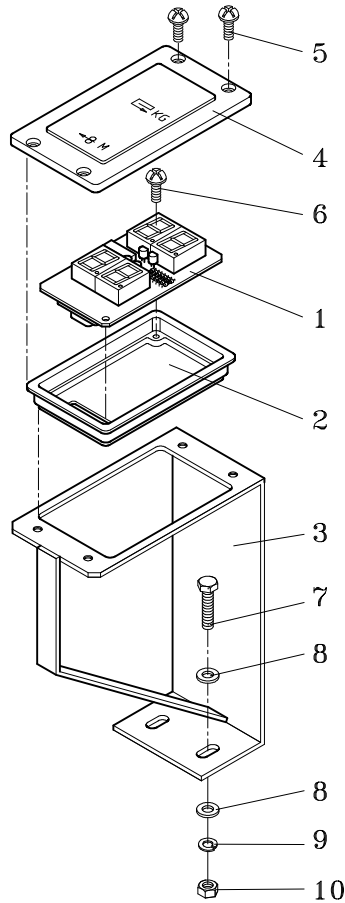
## ELECTRIC CONTROL GROUP

T5-4-10004

T5-4-20004

REF. NO.	PART NO.	DESCRIPTION	Q'TY	REMARKS
22	TG-019	Power Cord	1	
	T5-4-10322	Power Cord (For CE)	1	
	T5-4-10323	Power Cord (For CSA/UL)	1	
23	TMS0408	TMS, M4×8	4	
24	SW04	SW, M4	1	
25	HN04	HN, M4	1	
26	PMS0306	PMS, M3×6	4	
27	T5-4-10221	Knob ( φ 3.0)	2	
	T5-4-10222	Knob ( φ 6.0)	2	
28	T5-4-10231	Variable Resistor (5K) ( φ 3.0)	2	
	T5-4-10232	Variable Resistor (5K) ( φ 6.0)	2	
29	PMS0610	PMS, M6×10	4	
30	TMS0408	TMS, M4×8	6	
31	T5-4-10410	Key Switch (For TUV CE Version) (Option)	1	
32	PW04	PW, M4	2	
33	TMS0412	TMS, M4×12	1	
41	T5-4-10510	Wire Ass'y X1 (For Electric Group)	1	
42	T5-4-10520	Wire Ass'y X2 (For Jog Switch /Weld Cooling Timer/Heater Temperature Adjustment)	1	
43	T5-4-10530	Wire Ass'y X3 (For Micro Switch, SQ1/SQ2/SQ3)	1	
44	T5-4-10542	Wire Ass'y X4 (For Heater/Fan/Micro Switch SQ4)	1	
45	T5-4-10550	Wire Ass'y X5 (For Motor M1/M2)	1	
46	T5-4-10560	Wire Ass'y X6 (For Power)	1	
47	T5-4-10570	Wire Ass'y X7 (For With Display) (Option)	1	
48	LA-50055	Label (Option)	1	
50	LA-40001	Label	1	
51	LA-40003	Label	1	

**INDICATOR GROUP (OPTION) T5-4-30000  
T5-4-30001**



REF. NO.	PART NO.	DESCRIPTION	Q'TY	REMARKS
	T5-4-30000	Indicator Group(For Metric Size)(Option)	1	
	T5-4-30001	Indicator Group (For Imperial Size)(Option)	1	
1	T5-4-30110	Tension And Length Indicators	1	
2	TG-039	Lower Indicator Cover	1	
3	TG-038	Indicator Support	1	
4	TG-041	Upper Indicator Cover (For Metric Size)	1	
	TG-041-1	Upper Indicator Cover (For Imperial Size)	1	
5	PMS0408	PMS, M4×8	4	
6	PMS0412	PMS, M4×12	2	
7	HB0616	HB, M6×16	2	
8	PW06C	PW, M6 (C)	4	
9	SW06	SW, M6	2	
10	HN06	HN, M6	2	