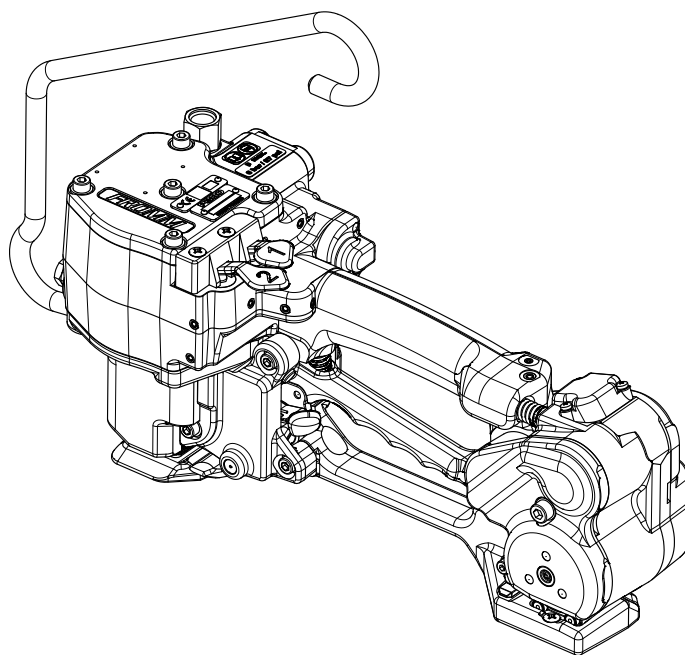


FROMM

OPERATION MANUAL

PNEUMATIC PLASTIC STRAPPING TOOL MODEL P380



	INDEX	PAGE
1	SAFETY INSTRUCTIONS	4-3
2	WARRANTY CONDITIONS AND LIABILITY	4-4
3	APPROPRIATE USE	4-4
4	CHART OF TYPES P380	4-4
5	TECHNICAL DATA	4-4
6	ACCESSORIES	4-5
7	INSTALLATION	4-6
7.1	Compressed air connection	4-6
7.2	Suspension of tool	4-6
7.3	Adjustments	4-7
8	OPERATING CONTROLS	4-7
9	OPERATION	4-8
9.1	Feeding the strap around the package	4-8
9.2	Inserting the lower strap	4-8
9.3	Inserting the upper strap	4-8
9.4	Tensioning the strap	4-9
9.5	Sealing the straps	4-9
9.6	Removing the tool	4-9
9.7	Seal - Control.	4-10
10	PNEUMATIC SCHEMATIC	4-10
11	EXCHANGE OF WEARING PARTS	4-11
11.1	Exchange of tensioning wheel and slide plate.	4-11
11.2	Exchange of welding gripper	4-12
11.3	Exchange of welding stop gripper, stop gripper and cutter	4-13
12	MAINTENANCE	4-14
12.1	Air unit	4-14
13	CLEANING	4-14
14	SERVICE / REPAIR	4-14

1 SAFETY INSTRUCTIONS

Read these instructions carefully. Failure to follow these instructions can result in severe personal injury.



Eye injury hazard

Failure to wear safety glasses with side shields can result in severe eye injury or blindness. Always wear safety glasses with side shields which conform to ANSI Standard Z87.1.



Operation

Tool must not be used by persons not properly trained in their use. Before tensioning strap, read and understand the tool operating instructions. Failure to follow the operating instructions or improper load positioning could result in strap breakage.

Become familiar with your tool and keep fingers away from areas that can pinch or cut.

Tool hazards

A well maintained tool is a safe tool!

Check tool regularly for broken or worn parts. Do not operate a tool with broken or worn parts.

Never modify any tool. Modification can result in severe bodily injury.

Joints

You are fully responsible to review the joints made by your tool. Become familiar with the seal control and seal adjustment described in this operation manual. Misformed joints may not secure the load and could cause serious injury. Never handle or ship any load with improperly formed joints.

Dispensing strap

Only dispense strap from a dispenser specifically designed for strap.

Tuck strap end back into dispenser when not in use.

Strap warnings

Never use strap as a means of pulling or lifting loads. Failure to follow these warnings can result in severe personal injury.

Fall hazard

Keep your working area tidy. Untidiness of your working area may cause a risk of injury. Maintaining improper footing and/or balance when operating the tool can cause you to fall. Before tensioning and especially in elevated areas, always establish good balance. Both feet should be securely placed on a flat, solid surface, especially when working in elevated areas. Do not use the tool when you are in an awkward position.

Pay attention to the rules and regulations for preventions of accident which are valid for the work place.

Strap breakage hazard

Improper operation of the tool, excessive tensioning, using strap not recommended for this tool or sharp corners on the load can result in a sudden loss of strap tension or in strap breakage during tensioning, which could result in the following:

- A sudden loss of balance causing you to fall.
- Both tool and strap flying violently towards your face.

Note as follows:

- If the load corners are sharp, use edge protectors.
- Place the strap correctly around a properly positioned load.
- Positioning yourself in-line with the strap, during tensioning and sealing, can result in severe personal injury from flying strap or tool. When tensioning or sealing, position yourself to one side of the strap and keep all bystanders away.
- Use the correct strap quality, strap width, strap gauge and strap tensile strength recommended in this manual for your tool. Using strap not recommended for this tool can result in strap breakage during tensioning.

Cutting tensioned strap

When cutting strapping, use the proper strapping cutter and keep other personnel and yourself at a safe distance from the strap. Always stand to side of the strap, away from the direction the loosened strap end will fly. Use only cutters designed for strap and never hammers, pliers, hacksaws, axes, etc.

2 WARRANTY CONDITIONS AND LIABILITY

FROMM Holding AG warrants all its strapping tools and machine heads during a period of 24 months from the date of installation at the end-user's sight by the distributor, however, not later than 30 months from the date of shipment to the distributor of FROMM Holding AG.

The warranty includes all deficiencies clearly resulting from poor manufacturing or faulty materials. Damage claims as a result of production shutdowns and claims for damage to persons and to property resulting from warranty deficiencies cannot be asserted by the customer.

The warranty excludes:

- wearing parts (tensioning wheels, cutters, punches, dies, notching knives, grippers, batteries and motors),
- deficiencies resulting from improper installing, incorrect handling and maintaining the tool,
- deficiencies resulting from using the tool without or with defective security- and safety devices,
- disregard of directions in the operation manual,
- arbitrary modifications of the tool,
- deficient control of wearing parts,
- deficient repair works of the tool.
- Use of consumable products not recommended by FROMM Holding AG

We reserve the right to modify the product at any time in order to improve its quality.

3 APPROPRIATE USE

The tool model P380 has been designed to strap packages with plastic strapping exclusively.

The warranty / liability excludes:

- non appropriate use of the tool,
- disregard of directions in the operation manual,
- disregard of control- and maintenance instructions.

4 CHART OF TYPES P380

Item No.	Model	Strap width	Strap thickness
49.3801	P380/13/0.40-0.64	13 mm / 1/2"	0.40-0.64 mm / .016 - .025"
49.3802	P380/13/0.65-1.05	13 mm / 1/2"	0.65-1.05 mm / .026 - .041"
49.3811	P380/15/0.40-0.64	15 mm	0.40-0.64 mm / .016 - .025"
49.3812	P380/15/0.65-1.05	15 mm	0.65-1.05 mm / .026 - .041"
49.3821	P380/16/0.40-0.64	16 mm / 5/8"	0.40-0.64 mm / .016 - .025"
49.3822	P380/16/0.65-1.05	16 mm / 5/8"	0.65-1.05 mm / .026 - .041"
49.3831	P380/19/0.40-0.64	19 mm / 3/4"	0.40-0.64 mm / .016 - .025"
49.3832	P380/19/0.65-1.05	19 mm / 3/4"	0.65-1.05 mm / .026 - .041"
49.3833	P380/19/1.06-1.35	19 mm / 3/4"	1.06-1.35 mm / .042 - .053"

5 TECHNICAL DATA

Description of the tool

The tool model P380 has been designed to strap packages with plastic strapping. The plastic strapping is fed around the package manually or in combination with a strap feeder. The straps are inserted in the tool, automatically tensioned, sealed by friction welding and separated.

Tool size with suspension bracket

Length: 390 mm / 15.4"
 Width: 135 mm / 5.3"
 Height: 305 mm / 12.0"

Weight: 6.8 kg / 15 lbs

Sound information

The A-weighted equivalent continuous sound level at the work place of the machine operator is typical 78 dB (A).

This value was determined according to DIN EN 11204 (07.96).

Deviation K: 3 dB

Vibration information

The weighted effective value of the acceleration typically amounts to less than 2.5m/s².

This value was determined according to DIN EN 28 662 T1 (01.93).

Deviation K: 0.15 m/s²

Strap material

Strap qualities: PET (Polyester) and PP (Polypropylene) plain or embossed.

Use only plastic straps recommended by your sales shop (name and address on the rear of the operation manual).

Strap dimensions: 13.0 -19.0mm / 1/2" - 3/4" X 0.4 - 1.35 mm / .016" - .053" (see chart of types)

Use only plastic straps with the correct strap dimensions for your tool.

Strap tension

Tensioning force*: Adjustable from 600 - max. 2000N / 135 - 450 lbs at 6 bar / 87 psi.

Tensioning speed*: 120 - max. 260 mm/s / 4.7" - max. 10.2" per second with steady air pressure of 6 bar / 87 psi

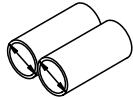
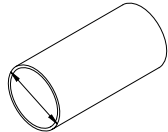
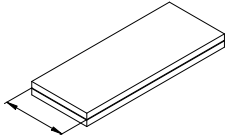
Seal

Type of seal: Friction weld sealing

Strength of seal*: Up to approx. 75% of strap tensile strength

* The value depends on the strap quality.

Package dimensions

Diameter of round / circular goods:	<p>min 2 x ø70mm </p>	<p>min ø 240mm </p>
Width:	<p>min 80mm </p>	

6 ACCESSORIES



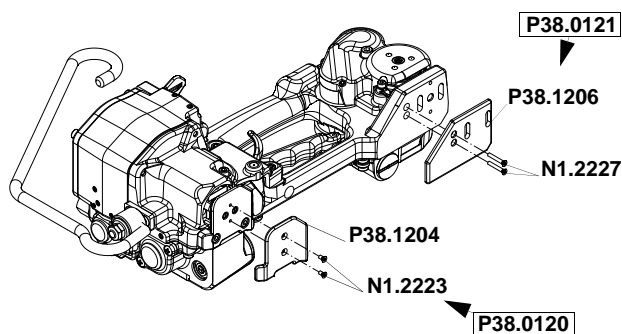
Use only parts and accessories mentioned in the operating instruction.

Using other parts or accessories can cause injuries to you and other persons.

Plate (option)

For the usage of the tool on packages with sensitive surface there can two plastic plates be assembled to the bottom side of the tool.

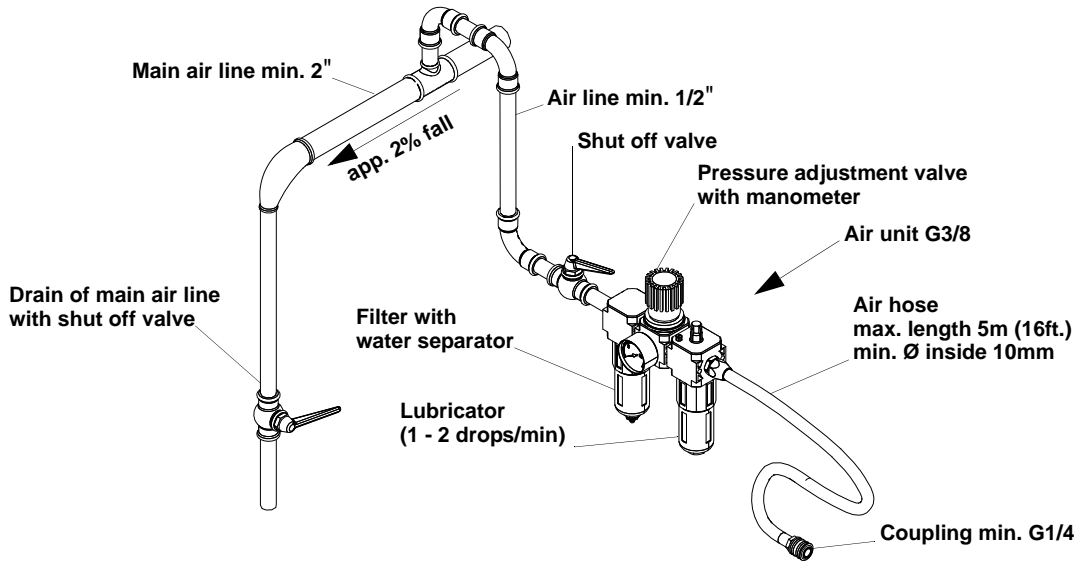
Every plate including fixation screws can be ordered with item number P38.0120 or P38.0121(see drawing) respectively.



7 INSTALLATION

7.1 Compressed air connection

The compressed air should be connected to the tool preferably by a quick disconnect. It is very important to clean the compressed air with an air unit consisting of a separator for water and dirt, a pressure regulator with a manometer and a lubricator (see sketch).



Air pressure

Joining thread: G1/4
 Air pressure: The maximum air pressure allowed is 6.0 bar / 87 psi.
 Air flow of air unit: Min. 520 NI/min / 18.4 cu.ft /min with a maximum pressure drop of 0.5 bar/ 7.25 psi.

Air consumption

Tensioning: 4.9 NI / 0.18 cu.ft uncompressed air per second with the air motor running.
 Sealing: 8.6 NI / 0.30 cu.ft uncompressed air per second with the air motor running.

Oil for air unit

HL resp. CL ISO-VG 10

7.2 Suspension of tool

It is possible to suspend the tool on a spring loaded balancer using the suspension bracket which is supplied with the tool. The suspension bracket has been designed in such a way, that the tool can be used for all three working positions.

