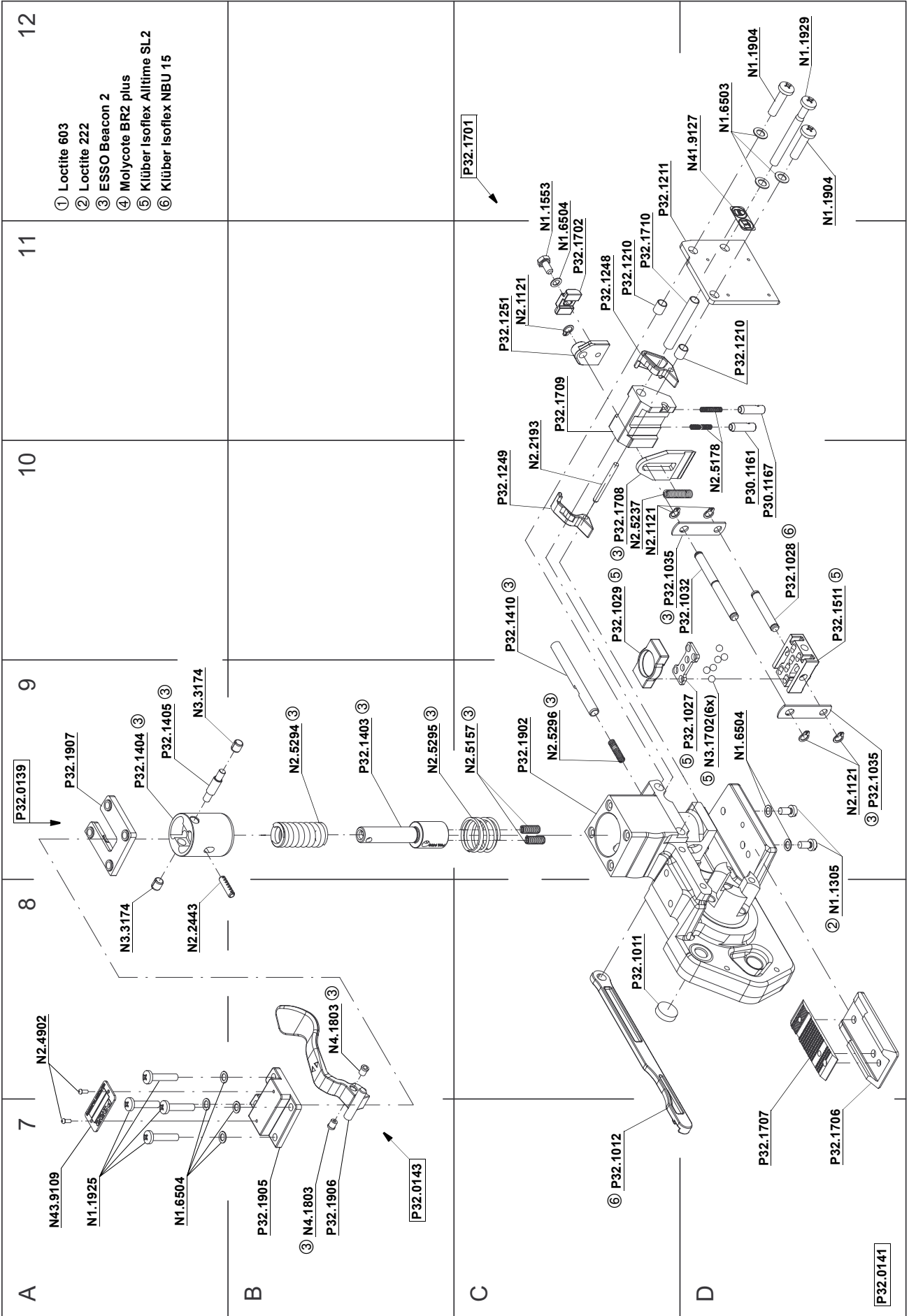
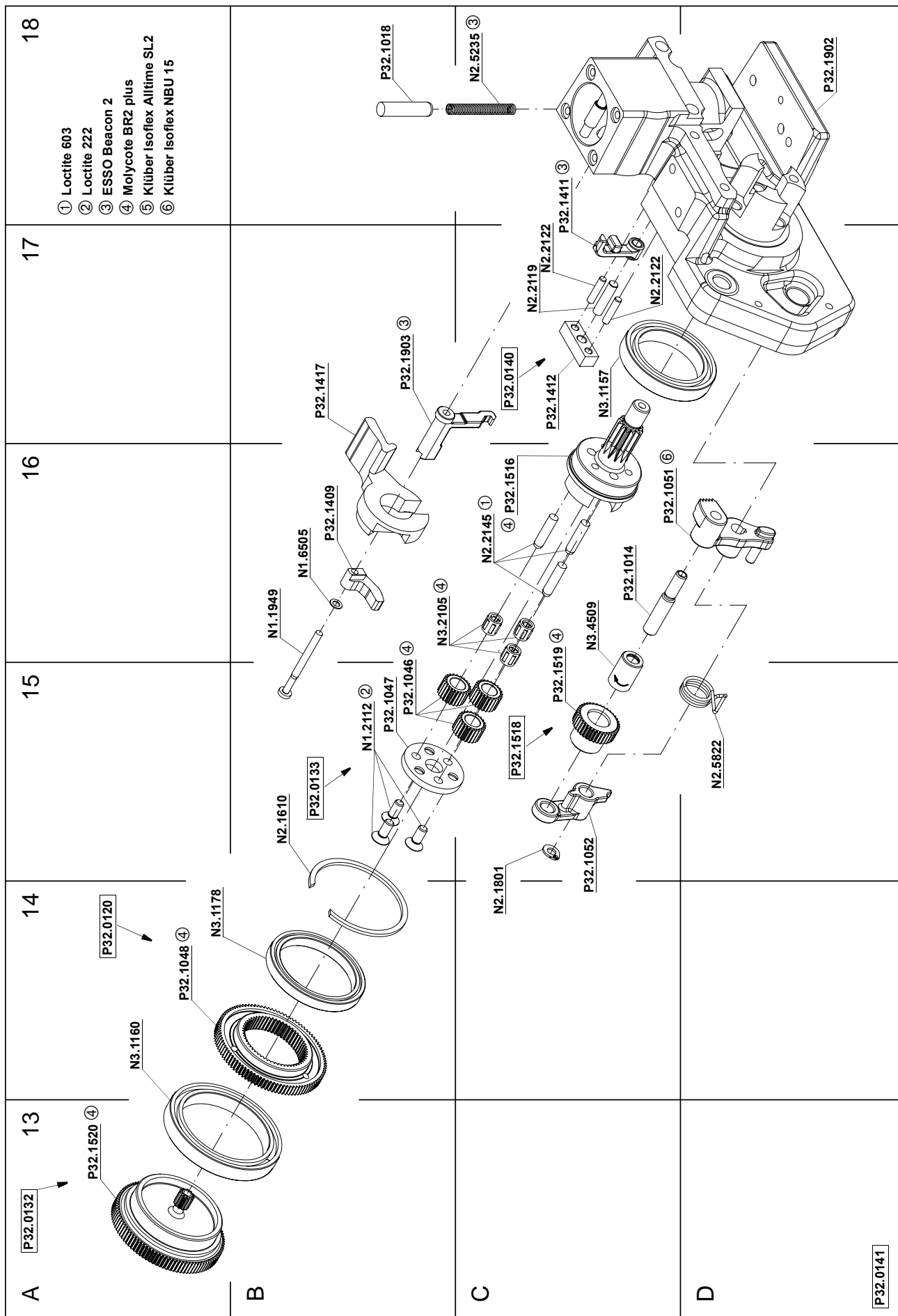
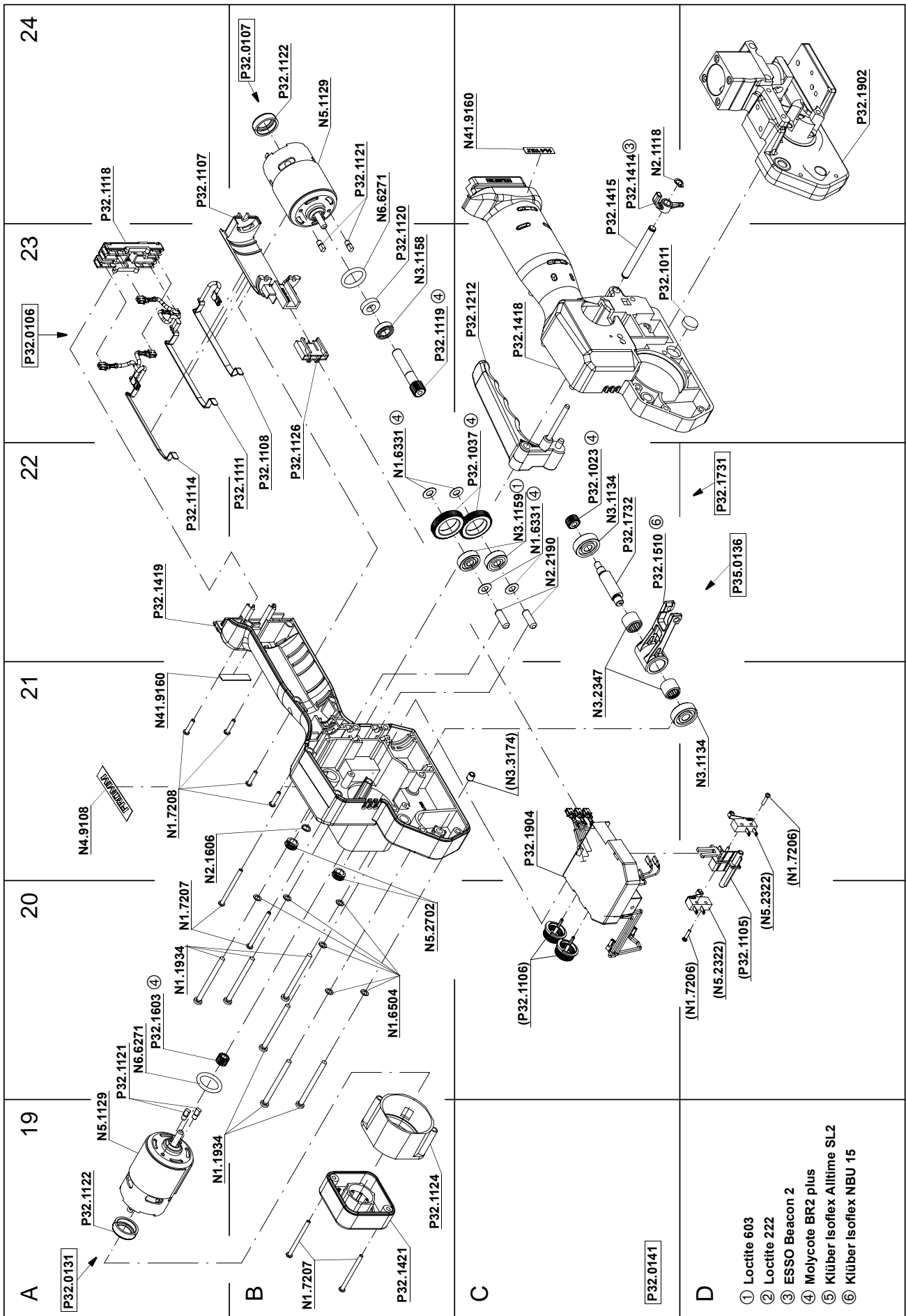


- ① Loctite 603
- ② Loctite 222
- ③ ESSO Beacon 2
- ④ Molycote BR2 plus
- ⑤ Klüber Isoflex Altime SL2
- ⑥ Klüber Isoflex NBU 15







13 SPARE PARTS LIST 43.3132.01

| 43.3132.01 | P323/19/0.65-1.05 | | P323.0001.01 | | | 08.09.05 |
|------------|-------------------|----------|--------------|-------------------|-----------------------------|----------|
| Item-No. | | in group | Pcs. | Description | Dimension | Field |
| N1.1305 | | | 2 | SCREW | M4 X 7.8 | D8 |
| N1.1553 | | P32.1701 | 1 | HEXAGON SCREW | M4 X 8 | C12 |
| N1.1904 | | | 4 | SCREW | M5 X 20 | C6+ |
| N1.1909 | | | 2 | FLAT HEAD SCREW | M3 X 5 | D3 |
| N1.1925 | | | 1 | SCREW | M4 X 20 | D6 |
| N1.1925 | | P32.0141 | 4 | SCREW | M4 X 20 | A7 |
| N1.1929 | | | 1 | SCREW | M5 X 50 | D12 |
| N1.1934 | | P32.0141 | 6 | FLAT HEAD SCREW | M4 X 50 | A19+ |
| N1.1949 | | P32.0141 | 1 | SCREW | M3 X 40 | B16 |
| N1.2112 | | P32.0133 | 3 | COUNTERSUNK SCREW | M4 X 10 | B15 |
| N1.2216 | | | 2 | COUNTERSUNK SCREW | M3 X 8 | D4+ |
| N1.6331 | | P32.0141 | 4 | SPACER WASHER | 6 X 12 X 0.5 | C22+ |
| N1.6503 | | | 5 | SAFETY WASHER | M5 | C6+ |
| N1.6504 | | | 3 | SAFETY WASHER | M4 | D6+ |
| N1.6504 | | P32.0141 | 10 | SAFETY WASHER | M4 | A7+ |
| N1.6504 | | P32.1701 | 1 | SAFETY WASHER | M4 | C11 |
| N1.6505 | | | 2 | SAFETY WASHER | M3 | D3 |
| N1.6505 | | P32.0141 | 1 | SAFETY WASHER | M3 | B16 |
| N1.7206 | | P32.1904 | 2 | PT-SCREW | 2.2 X 10 | D20+ |
| N1.7207 | | P32.0141 | 4 | PT-SCREW | 3 X 40 | A20+ |
| N1.7208 | | P32.0141 | 4 | PT-SCREW | 3 X 14 | A21 |
| N21.2101 | | P32.1901 | 3 | PARALLEL PIN | 5 h6 X 40 | B2+ |
| N21.2102 | | P32.0129 | 2 | PARALLEL PIN | 3 m6 X 8 | C4 |
| N2.1118 | | | 1 | SECURITY RING | 6 | C24 |
| N2.1121 | | | 1 | SECURITY RING | 5 | C11 |
| N2.1121 | | P32.0141 | 4 | SECURITY RING | 5 | D9+ |
| N2.1606 | | | 1 | SPRING RING | SW6 | A21 |
| N2.1610 | | P32.0141 | 1 | SPRING RING | SB44 | B15 |
| N2.1801 | | P32.0141 | 1 | TENSIONING RING | 4 | C14 |
| N2.2110 | | P32.1901 | 1 | PARALLEL PIN | 4 m6 X 10 | B2 |
| N2.2119 | | P32.0140 | 1 | PARALLEL PIN | 4 m6 X 18 | C17 |
| N2.2122 | | P32.0140 | 2 | PARALLEL PIN | 3 h6 X 14 | C17 |
| N2.2145 | | P32.0133 | 3 | PARALLEL PIN | 4 h6 X 18 | C16 |
| N2.2187 | | P32.1901 | 1 | PARALLEL PIN | 3 m6 X 6 | A3 |
| N2.2189 | | P32.0121 | 4 | PARALLEL PIN | 3 m6 X 5 | D3 |
| N2.2190 | | P32.0141 | 2 | PARALLEL PIN | 6 h6 X 18 | C22 |
| N2.2193 | | | 1 | PARALLEL PIN | 3 m6 X 32 | C10 |
| N2.2443 | | P32.0139 | 1 | DOWEL PIN | 4 X 15 | A8 |
| N2.3342 | | P32.0141 | 1 | FEATHER KEY | 2 X 2 X 10 | C2 |
| N2.4902 | | | 4 | HAMMER HEAD BOLT | 1.85 X 4.76 | C6+ |
| N2.5157 | | P32.0141 | 2 | PRESSURE SPRING | 0.6 X 4.8 X 20/15.5 | C9 |
| N2.5178 | | | 2 | PRESSURE SPRING | 0.32 X 2.82 X 20.5/ 20.5 | D10 |
| N2.5235 | | P32.0141 | 1 | PRESSURE SPRING | 0.5 X 4.50 X 42.4/28.5 | C18 |
| N2.5237 | | | 1 | PRESSURE SPRING | 0.8 X 4.8 X 25/18.5 | C10 |
| N2.5294 | | P32.0139 | 1 | PRESSURE SPRING | 2.5 X 15 X 46.5/9.5 | B9 |
| N2.5295 | | P32.0141 | 1 | PRESSURE SPRING | 1.5 X 21 X 27/5.5 | B9 |
| N2.5296 | | P32.0141 | 1 | PRESSURE SPRING | 0.5 X 4 X 24/16.5 | C9 |
| N2.5822 | | P32.0141 | 1 | TORSION SPRING | 1.25 X 12/3.75 | D15 |
| N2.5823 | | | 1 | TORSION SPRING | 2.8 X 17/4 | D4 |
| N3.1134 | | P32.0141 | 1 | BALL BEARING | 7 X 22 X 7 | D21 |

[] = Group

* = Wearing parts

| 43.3132.01 | P323/19/0.65-1.05 | | P323.0001.01 | | | 08.09.05 |
|------------|-------------------|----------|--------------|----------------------|-----------------|----------|
| Item-No. | | in group | Pcs. | Description | Dimension | Field |
| N3.1134 | | P32.1731 | 1 | BALL BEARING | 7 X 22 X 7 | C22 |
| N3.1157 | | P32.0133 | 1 | BALL BEARING | 30 X 42 X 7 | C17 |
| N3.1158 | | P32.0107 | 1 | BALL BEARING | 8 X 16 X 5 | B23 |
| N3.1159 | | P32.0141 | 2 | BALL BEARING | 6 X 19 X 6 | C22 |
| N3.1160 | | P32.0132 | 1 | BALL BEARING | 40 X 52 X 7 | A14 |
| N3.1172 | | | 2 | BALL BEARING | 30 X 42 X 7 | B3+ |
| N3.1178 | | P32.0120 | 1 | BALL BEARING | 35 X 44 X 5 | A14 |
| N3.1702 | | P32.0141 | 6 | BALL | 4 MM | D9 |
| N3.2105 | | P32.0133 | 3 | NEEDLE CAGE | K 4 X 7 X 7 TN | B16 |
| N3.2107 | | | 3 | NEEDLE CAGE | K 5 X 9 X 13 TN | B3 |
| N3.2347 | | P35.0136 | 2 | NEEDLE BUSH | 10 X 14 X 12 | C21 |
| N3.2350 | | P32.0129 | 1 | NEEDLE CASE | 6 X 10 X 9 | C5 |
| N3.3150 | | P32.0121 | 3 | SLIDE-BEARING | 8 X 10 X 12 | C3 |
| N3.3172 | | P32.1901 | 1 | SLIDE-BEARING | 8 X 10 X 10 | C1 |
| N3.3174 | | P32.0139 | 2 | SLIDE-BEARING | 4 X 5.5 X 6 | A8+ |
| N3.3174 | | P32.1419 | 1 | SLIDE-BEARING | 4 X 5.5 X 6 | C21 |
| N3.4509 | | P32.1518 | 1 | NEEDLE FREE WHEELING | 6 X 10 X 15 | C16 |
| N41.9127 | | | 1 | ADHESIVE LABEL | 20 X 10 X 0.1 | D12 |
| N41.9160 | | P32.0141 | 2 | ADHESIVE LABEL | 14.4 VOLT | A21+ |
| N43.9109 | | | 1 | TYPE PLATE | <<P323>> | A7 |
| N4.1803 | | P32.0143 | 2 | THRUST PIECE | | B7+ |
| N4.9108 | | | 1 | ADHESIVE LABEL | 54 X 12 X 0.1 | A21 |
| N4.9159 | | | 1 | LABEL | <<CE>> | C6 |
| N5.1129 | | P32.0107 | 1 | ELECTRIC MOTOR | | B24 |
| N5.1129 | | P32.0131 | 1 | ELECTRIC MOTOR | | A19 |
| N5.2322 | | P32.1904 | 2 | MICRO SWITCH | | D20 |
| N5.2702 | | | 1 | COVER | | B20 |
| N5.2702 | | P32.0141 | 1 | COVER | | B20 |
| N6.6271 | | P32.0107 | 1 | O-RING | 17 X 3.0 | B24 |
| N6.6271 | | P32.0131 | 1 | O-RING | 17 X 3.0 | A20 |
| P30.1161 | | | 1 | GUIDE PIN | | D10 |
| P30.1167 | | | 1 | GUIDE PIN | | D10 |
| [P32.0106] | | P32.0141 | 1 | ENERGY TRANSMISSION | | A23 |
| [P32.0107] | | P32.0141 | 1 | WELDING MOTOR | | B24 |
| [P32.0120] | | P32.0141 | 1 | WHEEL | | A14 |
| [P32.0121] | | | 1 | TENSIONING BODY | | D2 |
| [P32.0129] | | | 1 | END COVER | | B6 |
| [P32.0131] | | P32.0141 | 1 | TENSIONING MOTOR | | A19 |
| [P32.0132] | | P32.0141 | 1 | SPUR WHEEL | | A13 |
| [P32.0133] | | P32.0141 | 1 | IDLER STEP | | B15 |
| [P32.0139] | | P32.0141 | 1 | SPRING PACKAGE | | A9 |
| [P32.0140] | | P32.0141 | 1 | INSERTATION PART | | C17 |
| [P32.0141] | | | 1 | BASE MODEL | | C1+ |
| [P32.0143] | | P32.0141 | 1 | LEVER | | B7 |
| P32.1011 | | P32.0141 | 2 | FELT | | C8+ |
| P32.1012 | | P32.0141 | 1 | COUPLER | | C7 |
| P32.1014 | | P32.0141 | 1 | SHAFT | | C16 |
| P32.1018 | | P32.0141 | 1 | CARTRIDGE | | B18 |
| P32.1023 | | P32.1731 | 1 | PINION | | C22 |
| P32.1027 | | P32.0141 | 1 | BALL CAGE | | D9 |
| P32.1028 | | P32.0141 | 1 | BOLT | | D10 |
| P32.1029 | | P32.0141 | 1 | THRUST PIECE | | C10 |
| P32.1032 | | P32.0141 | 1 | DRIVING PIN | | D10 |

[] = Group

* = Wearing parts

| 43.3132.01 | P323/19/0.65-1.05 | | P323.0001.01 | | 08.09.05 |
|------------|-------------------|------|-------------------|-----------|----------|
| Item-No. | in group | Pcs. | Description | Dimension | Field |
| P32.1035 | P32.0141 | 2 | DRIVER | | D9+ |
| P32.1037 | P32.0141 | 2 | SPUR WHEEL | | C22 |
| P32.1046 | P32.0133 | 3 | IDLER GEAR | | B15 |
| P32.1047 | P32.0133 | 1 | COVER | | B15 |
| P32.1048 | P32.0120 | 1 | WHEEL | | A14 |
| P32.1050 | P32.0141 | 1 | FRONT TOGGLE LINK | | C2 |
| P32.1051 | P32.0141 | 1 | LEVER | | C16 |
| P32.1052 | P32.0141 | 1 | STANCHION | | C15 |
| P32.1105 | P32.1904 | 1 | RETAINER | | D20 |
| P32.1106 | P32.1904 | 2 | TURNING BUTTON | | C20 |
| P32.1107 | P32.0106 | 1 | MOTOR SUPPORT | | A24 |
| [P32.1108] | P32.0106 | 1 | BUSBAR | | B22 |
| [P32.1111] | P32.0106 | 1 | BUSBAR | | B22 |
| [P32.1114] | P32.0106 | 1 | BUSBAR | | A22 |
| P32.1118 | P32.0106 | 1 | CONNECTING PLATE | | A24 |
| P32.1119 | P32.0107 | 1 | PINION | | B23 |
| P32.1120 | P32.0107 | 1 | FELT WASHER | | B23 |
| P32.1121 | P32.0107 | 2 | TORSIONAL STOP | | B24 |
| P32.1121 | P32.0131 | 2 | TORSIONAL STOP | | A20 |
| P32.1122 | P32.0107 | 1 | RUBBER BUSHING | | B24 |
| P32.1122 | P32.0131 | 1 | RUBBER BUSHING | | A19 |
| P32.1124 | P32.0141 | 1 | INSERT | | B19 |
| P32.1126 | P32.0106 | 1 | PLUG SOCKET | | B22 |
| P32.1210 | | 2 | CENTERING SLEEVE | | C11+ |
| P32.1211 | | 1 | COVER | | C12 |
| [P32.1212] | | 1 | HANDLE LEVER | | C23 |
| P32.1216 | | 1 | PRESSURE ROLLER | | C2 |
| P32.1228 | | 1 | HOLDER | | C3 |
| P32.1229 | | 1 | HOLDER | | B3 |
| P32.1248 | | 1 | SEESAW LEVER | | C11 |
| P32.1249 | | 1 | SEESAW LEVER | | C10 |
| P32.1251 | P32.1701 | 1 | COUPLER | | C11 |
| P32.1403 | P32.0139 | 1 | SPRING BOLT | | B9 |
| P32.1404 | P32.0139 | 1 | SPRING SLIDE | | A9 |
| P32.1405 | P32.0139 | 1 | ROLLER | | A9 |
| P32.1409 | P32.0141 | 1 | ARM | | B16 |
| P32.1410 | P32.0141 | 1 | COUPLER | | C10 |
| P32.1411 | P32.0141 | 1 | LEVER | | C18 |
| P32.1412 | P32.0140 | 1 | INSERTATION PART | | C17 |
| P32.1414 | | 1 | LEVER | | C24 |
| P32.1415 | | 1 | HANDLE SHAFT | | C24 |
| P32.1417 | P32.0141 | 1 | SWITCH ROCKER | | B17 |
| P32.1418 | P32.0141 | 1 | MOTOR HOUSING | | C23 |
| [P32.1419] | P32.0141 | 1 | MOTOR HOUSING | | A22 |
| P32.1421 | P32.0141 | 1 | MOTOR COVER | | B19 |
| P32.1503 | P32.1901 | 1 | SWIVEL SHAFT | | C2 |
| P32.1510 | P35.0136 | 1 | ROCKER | | C22 |
| P32.1511 | * P32.0141 | 1 | WELDING GRIPPER | | D10 |
| P32.1516 | P32.0133 | 1 | PLANET SHAFT | | C16 |
| [P32.1518] | P32.0141 | 1 | RATCHET WHEEL | | C15 |
| P32.1519 | P32.1518 | 1 | SPUR WHEEL | | C15 |
| P32.1520 | P32.0132 | 1 | SPUR WHEEL | | A13 |
| P32.1603 | P32.0131 | 1 | PINION | | A20 |

[] = Group

* = Wearing parts

| 43.3132.01 | P323/19/0.65-1.05 | | P323.0001.01 | | | 08.09.05 |
|------------|-------------------|----------|--------------|----------------------|-----------|----------|
| Item-No. | | in group | Pcs. | Description | Dimension | Field |
| [P32.1701] | | | 1 | COUPLER | | C12 |
| P32.1702 | | P32.1701 | 1 | THRUST PIECE | | C11 |
| P32.1703 | | P32.0121 | 1 | TENSIONING BODY | | C4 |
| P32.1706 | | | 1 | STEEL INSERT | | D7 |
| P32.1707 | * | | 1 | WELDING STOP GRIPPER | | D7 |
| P32.1708 | * | | 1 | CUTTER | | C10 |
| P32.1709 | | | 1 | GUIDE CASE | | C11 |
| P32.1710 | | | 1 | CENTERING SLEEVE | | C11 |
| P32.1712 | | | 3 | DOWEL | | B4 |
| P32.1719 | * | | 1 | GRIPPER | | C3 |
| P32.1720 | * | | 1 | GRIPPER | | C3 |
| P32.1721 | * | | 1 | GRIPPER | | C4 |
| P32.1723 | | | 1 | STRAP STOP | | D4 |
| P32.1724 | | | 1 | STRAP GUIDE | | C4 |
| P32.1726 | | P32.0129 | 1 | END COVER | | C5 |
| P32.1727 | | | 3 | IDLER GEAR | | B4 |
| P32.1729 | * | | 1 | TENSIONING WHEEL | | B4 |
| [P32.1731] | | P32.0141 | 1 | WELDING EXCENTRIC | | D22 |
| P32.1732 | | P32.1731 | 1 | WELDING EXCENTRIC | | C22 |
| [P32.1901] | | P32.0141 | 1 | BODY | | A2 |
| P32.1902 | | P32.1901 | 1 | BODY | | A1+ |
| P32.1903 | | P32.0141 | 1 | HOOK | | B17 |
| [P32.1904] | | P32.0141 | 1 | CIRCUIT BOARD | 14.4V | C21 |
| P32.1905 | | P32.0141 | 1 | COVER | | B7 |
| P32.1906 | | P32.0143 | 1 | LEVER | | B7 |
| P32.1907 | | P32.0141 | 1 | FIXING PLATE | | A9 |
| [P35.0136] | | P32.0141 | 1 | ROCKER | | D22 |

[] = Group

* = Wearing parts